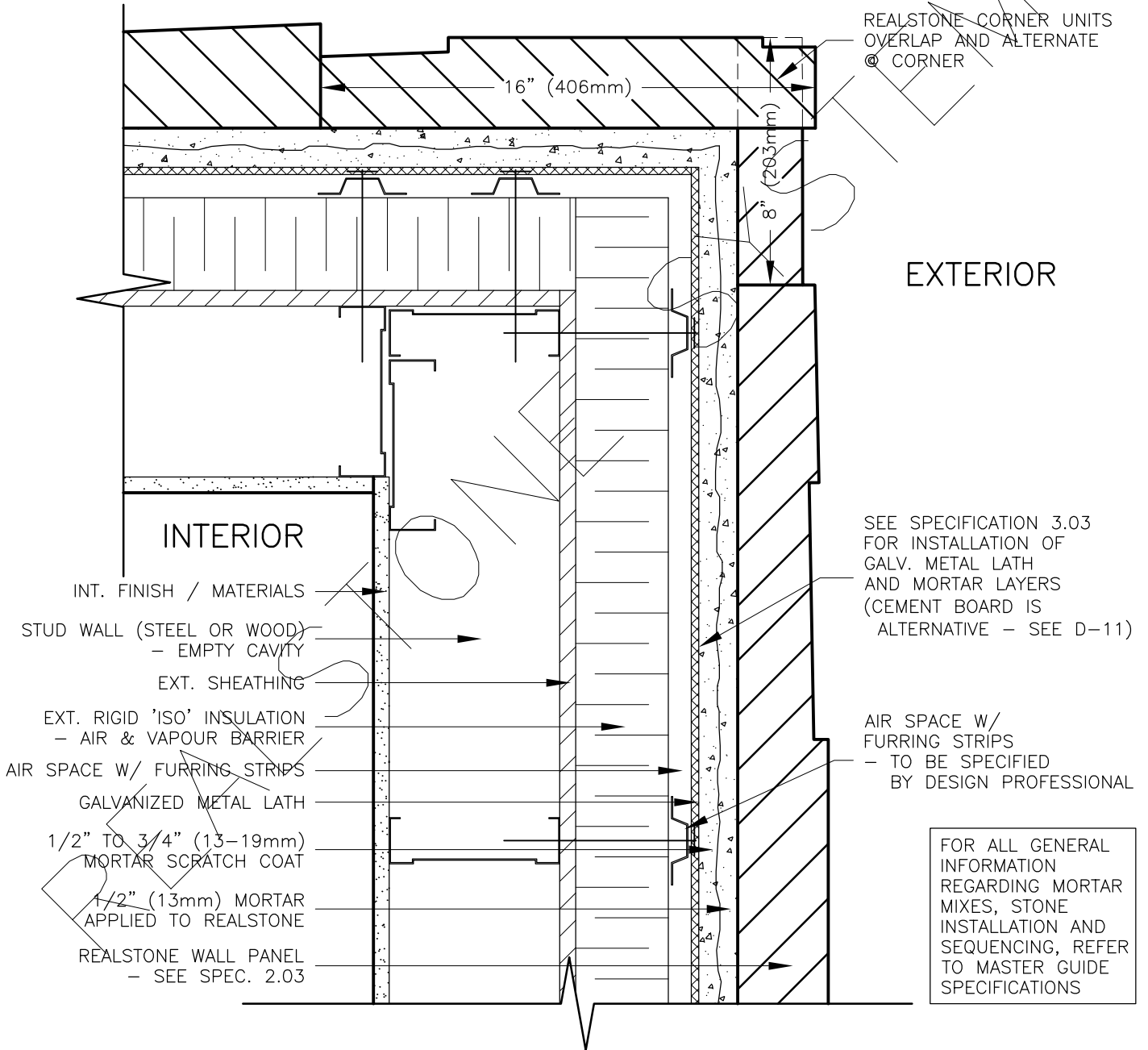


# EXTERIOR STUD WALL (METAL LATH) WITH SUPER 'E' WALL ASSEMBLY OUTSIDE CORNER DETAIL (PLAN)



### DRAWING DESCRIPTION:

THIS DETAIL ILLUSTRATES THE REALSTONE SYSTEM INSTALLED AROUND AN OUTSIDE EXTERIOR CORNER. THE REALSTONE CORNER UNITS (SEE SPEC. 2.03-B) ARE SPECIAL STONE UNITS MADE SPECIFICALLY TO OVERLAP AND ALTERNATE AROUND THE CORNER OF THE BUILDING. INSTALL CORNER UNITS FIRST WHEN INSTALLING THE REALSTONE SYSTEM (SEE SPEC. 3.02-E). NOTE THAT THIS WALL ASSEMBLY IS A SUPER 'E' WALL, HOWEVER, ALL WALL ASSEMBLIES REQUIRE A SIMILAR REALSTONE CORNER UNIT CONFIGURATION.

SHEET NO:

D-09

DRAWING: EXT. WALL - OUTSIDE CORNER - (PLAN)

**realstone SYSTEMS™**  
Realstone Simply Installed

NOTE: REALSTONE SYSTEMS' DETAILS ARE PROVIDED FOR THE CLARIFICATION OF THE MANUFACTURED PRODUCT, ITS APPLICATIONS AND TO ASSIST IN THE PROCESS OF PROJECT SPECIFIC DETAILS. DESIGN PRINCIPLES AND SPECIFICATIONS INCORPORATED IN THE FINAL DETAILS ARE THE RESPONSIBILITY OF THE PROJECT DESIGN PROFESSIONAL IN COMPLIANCE WITH THE LOCAL BUILDING CODE.

SCALE: 1:5

DATE: 08-12-12