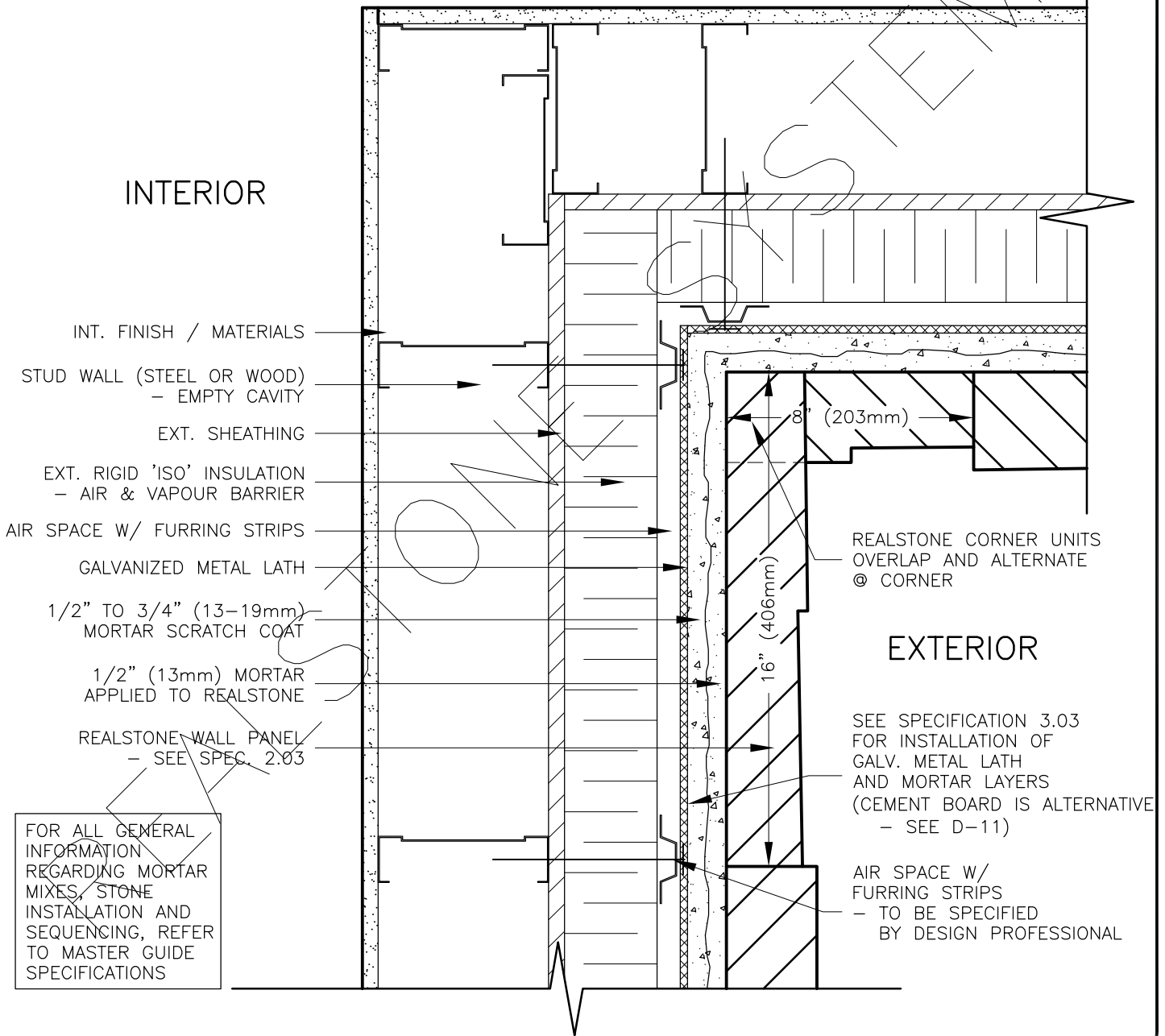


**EXTERIOR STUD WALL (METAL LATH) WITH  
SUPER 'E' WALL ASSEMBLY  
INSIDE CORNER DETAIL (PLAN)**



INTERIOR

EXTERIOR

- INT. FINISH / MATERIALS
- STUD WALL (STEEL OR WOOD)  
- EMPTY CAVITY
- EXT. SHEATHING
- EXT. RIGID 'ISO' INSULATION  
- AIR & VAPOUR BARRIER
- AIR SPACE W/ FURRING STRIPS
- GALVANIZED METAL LATH
- 1/2" TO 3/4" (13-19mm)  
MORTAR SCRATCH COAT
- 1/2" (13mm) MORTAR  
APPLIED TO REALSTONE
- REALSTONE WALL PANEL  
- SEE SPEC. 2.03

REALSTONE CORNER UNITS  
OVERLAP AND ALTERNATE  
© CORNER

SEE SPECIFICATION 3.03  
FOR INSTALLATION OF  
GALV. METAL LATH  
AND MORTAR LAYERS  
(CEMENT BOARD IS ALTERNATIVE  
- SEE D-11)

AIR SPACE W/  
FURRING STRIPS  
- TO BE SPECIFIED  
BY DESIGN PROFESSIONAL

FOR ALL GENERAL  
INFORMATION  
REGARDING MORTAR  
MIXES, STONE  
INSTALLATION AND  
SEQUENCING, REFER  
TO MASTER GUIDE  
SPECIFICATIONS

**DRAWING DESCRIPTION:**

THIS DETAIL ILLUSTRATES THE REALSTONE SYSTEM INSTALLED AROUND AN INSIDE EXTERIOR CORNER. THE REALSTONE CORNER UNITS (SEE SPEC. 2.03-B - SAME AS THE OUTSIDE CORNER UNITS) ARE SPECIAL STONE UNITS MADE SPECIFICALLY TO OVERLAP AND ALTERNATE AROUND THE CORNER OF THE BUILDING. INSTALL CORNER UNITS FIRST WHEN INSTALLING THE REALSTONE SYSTEM (SEE SPEC. 3.02-E). NOTE THAT THIS WALL ASSEMBLY IS A SUPER 'E' WALL, HOWEVER, ALL WALL ASSEMBLIES REQUIRE A SIMILAR REALSTONE CORNER UNIT CONFIGURATION.

SHEET NO:  
**D-10**

DRAWING: **EXT. WALL - INSIDE CORNER - (PLAN)**

**realstone SYSTEMS™**  
Realstone Simply Installed

NOTE: REALSTONE SYSTEMS' DETAILS ARE PROVIDED FOR THE CLARIFICATION OF THE MANUFACTURED PRODUCT, ITS APPLICATIONS AND TO ASSIST IN THE PROCESS OF PROJECT SPECIFIC DETAILS. DESIGN PRINCIPLES AND SPECIFICATIONS INCORPORATED IN THE FINAL DETAILS ARE THE RESPONSIBILITY OF THE PROJECT DESIGN PROFESSIONAL IN COMPLIANCE WITH THE LOCAL BUILDING CODE.

SCALE: **1:5**

DATE: **08-12-12**