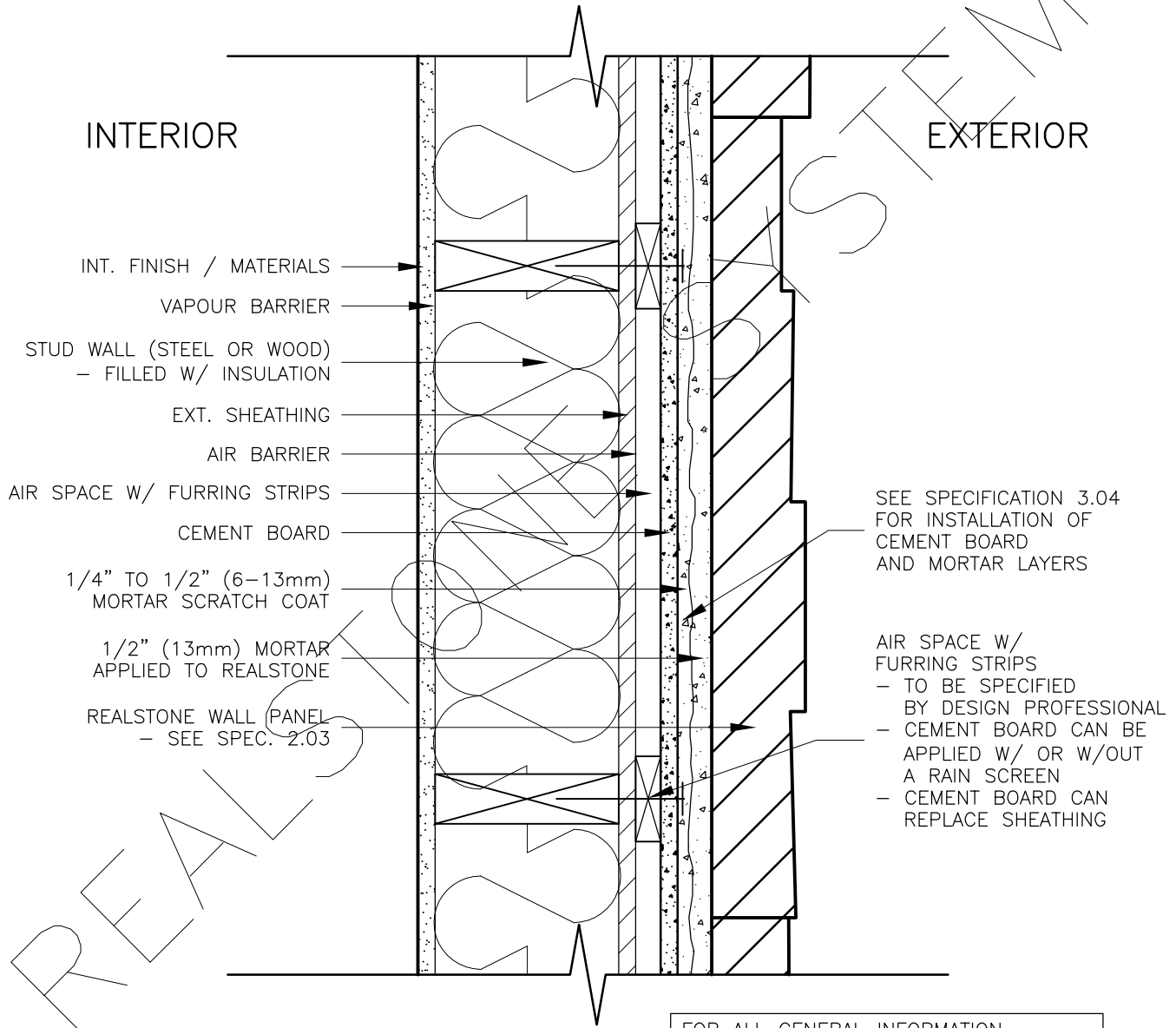


EXTERIOR STUD WALL (CEMENT BOARD) WITH PRESSURE EQUALIZED RAIN SCREEN (PLAN)



SEE SPECIFICATION 3.04 FOR INSTALLATION OF CEMENT BOARD AND MORTAR LAYERS

AIR SPACE W/ FURRING STRIPS
 - TO BE SPECIFIED BY DESIGN PROFESSIONAL
 - CEMENT BOARD CAN BE APPLIED W/ OR W/OUT A RAIN SCREEN
 - CEMENT BOARD CAN REPLACE SHEATHING

FOR ALL GENERAL INFORMATION REGARDING MORTAR MIXES, STONE INSTALLATION AND SEQUENCING, REFER TO MASTER GUIDE SPECIFICATIONS

DRAWING DESCRIPTION:

THIS DETAIL ILLUSTRATES THE REALSTONE SYSTEM INSTALLED ON CEMENT BOARD (AN ALTERNATIVE TO THE GALVANIZED METAL LATH). CEMENT BOARD CAN REPLACE THE METAL LATH ON ALL WALL SYSTEMS. IN SOME CASES, CEMENT BOARD MIGHT SIMPLY INSTALLATION AND REDUCE THE MATERIALS USED. THE CEMENT BOARD INSTALLATION PROCESS IS THE SAME AS A MASONRY WALL (SEE SPEC. 3.04). THIS EXAMPLE IS INSTALLED WITH A PRESSURE EQUALIZED RAIN SCREEN CAVITY IN THE WALL.

SHEET NO:
D-12

DRAWING: EXT. WALL W/ CEMENT BOARD & RAIN SCREEN (PLAN)

realstone SYSTEMS™
Realstone Simply Installed

NOTE: REALSTONE SYSTEMS' DETAILS ARE PROVIDED FOR THE CLARIFICATION OF THE MANUFACTURED PRODUCT, ITS APPLICATIONS AND TO ASSIST IN THE PROCESS OF PROJECT SPECIFIC DETAILS. DESIGN PRINCIPLES AND SPECIFICATIONS INCORPORATED IN THE FINAL DETAILS ARE THE RESPONSIBILITY OF THE PROJECT DESIGN PROFESSIONAL IN COMPLIANCE WITH THE LOCAL BUILDING CODE.

SCALE: 1:5

DATE: 08-12-12