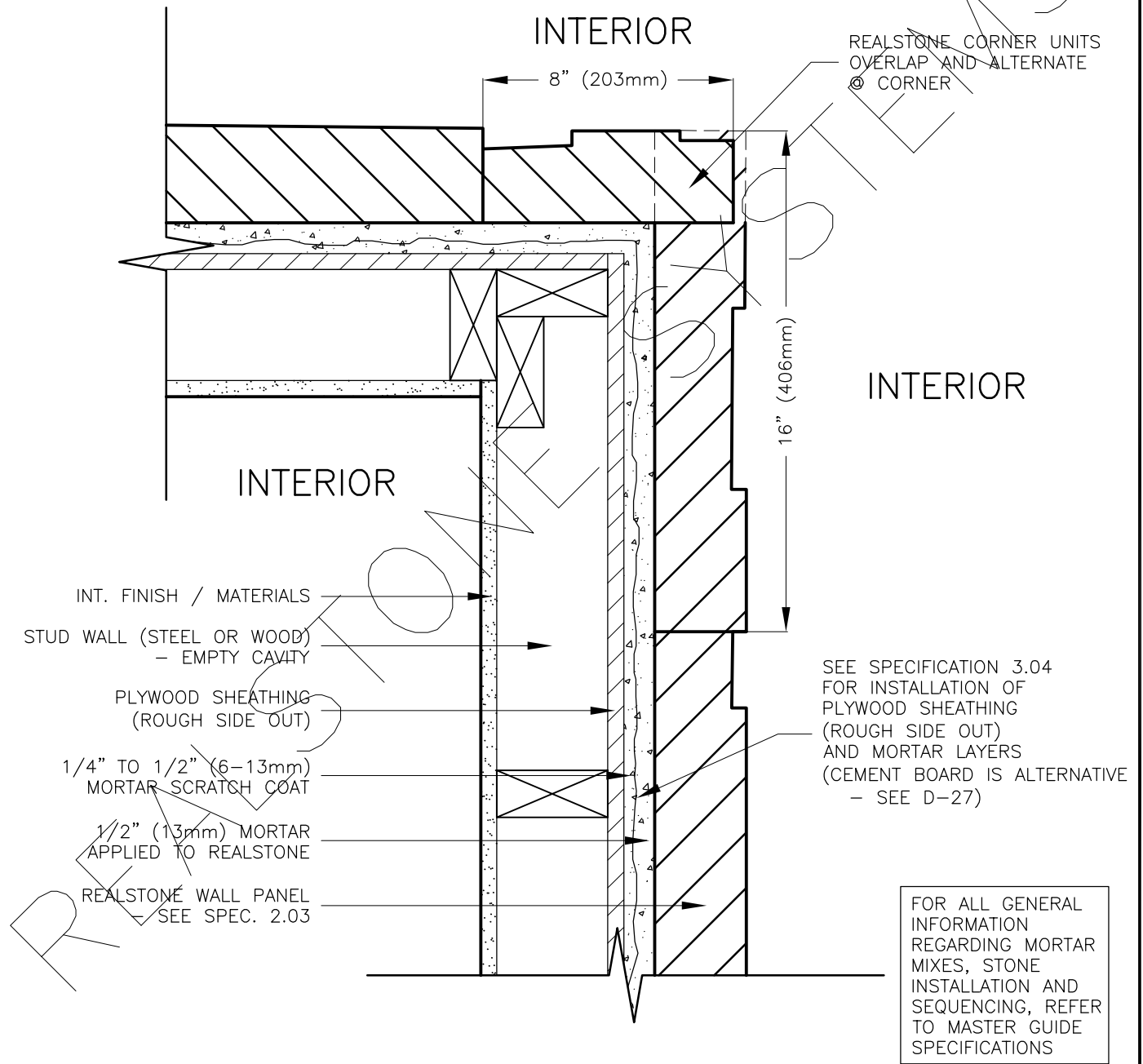


INTERIOR STUD WALL (PLYWOOD) OUTSIDE CORNER DETAIL (PLAN)



DRAWING DESCRIPTION:
 THIS DETAIL ILLUSTRATES THE REALSTONE SYSTEM INSTALLED AROUND AN OUTSIDE INTERIOR CORNER. THE REALSTONE CORNER UNITS (SEE SPEC. 2.03-B) ARE SPECIAL STONE UNITS MADE SPECIFICALLY TO OVERLAP AND ALTERNATE AROUND THE CORNER OF THE INTERIOR WALL / OPENING. INSTALL CORNER UNITS FIRST WHEN INSTALLING THE REALSTONE SYSTEM (SEE SPEC. 3.02-E). NOTE THAT THIS WALL ASSEMBLY IS CREATED WITH PLYWOOD SHEATHING. SEE D-23 FOR SPECIFICATIONS REGARDING THE INSTALLATION OF THE MORTAR ON THE PLYWOOD. CEMENT BOARD IS AN ALTERNATIVE TO PLYWOOD ON INTERIOR WALLS.

SHEET NO:
D-25

DRAWING: INT. WALL - OUTSIDE CORNER - (PLAN)

realstone SYSTEMS™
Realstone Simply Installed

NOTE: REALSTONE SYSTEMS' DETAILS ARE PROVIDED FOR THE CLARIFICATION OF THE MANUFACTURED PRODUCT, ITS APPLICATIONS AND TO ASSIST IN THE PROCESS OF PROJECT SPECIFIC DETAILS. DESIGN PRINCIPLES AND SPECIFICATIONS INCORPORATED IN THE FINAL DETAILS ARE THE RESPONSIBILITY OF THE PROJECT DESIGN PROFESSIONAL IN COMPLIANCE WITH THE LOCAL BUILDING CODE.

SCALE: 1:5

DATE: 08-12-12