

INTERIOR STUD WALL (PLYWOOD)  
INTERIOR CORNER DETAIL (PLAN)

INTERIOR

INTERIOR

INTERIOR

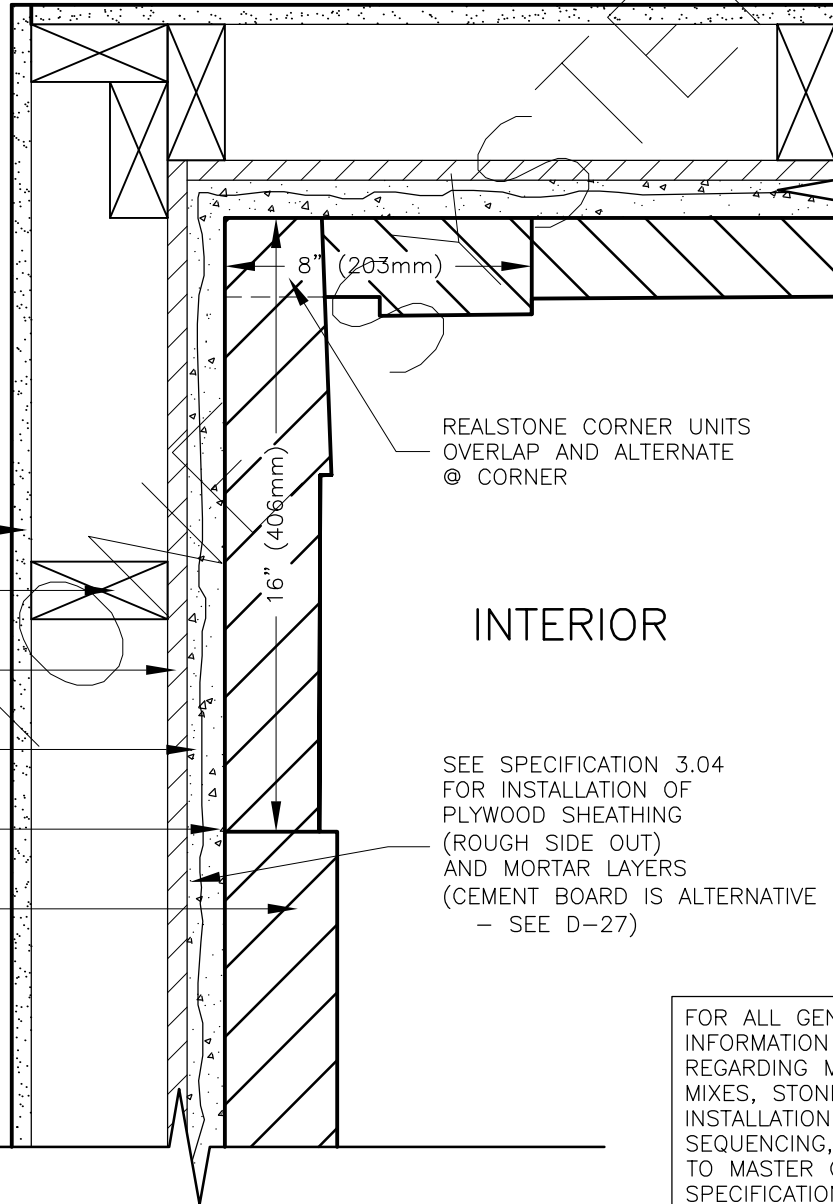
REALSTONE CORNER UNITS  
 OVERLAP AND ALTERNATE  
 @ CORNER

SEE SPECIFICATION 3.04  
 FOR INSTALLATION OF  
 PLYWOOD SHEATHING  
 (ROUGH SIDE OUT)  
 AND MORTAR LAYERS  
 (CEMENT BOARD IS ALTERNATIVE  
 - SEE D-27)

FOR ALL GENERAL  
 INFORMATION  
 REGARDING MORTAR  
 MIXES, STONE  
 INSTALLATION AND  
 SEQUENCING, REFER  
 TO MASTER GUIDE  
 SPECIFICATIONS

- INT. FINISH / MATERIALS
- STUD WALL (STEEL OR WOOD)  
 - EMPTY CAVITY
- PLYWOOD SHEATHING  
 (ROUGH SIDE OUT)
- 1/4" TO 1/2" (6-13mm)  
 MORTAR SCRATCH COAT
- 1/2" (13mm) MORTAR  
 APPLIED TO REALSTONE
- REALSTONE WALL PANEL  
 - SEE SPEC. 2.03

REALSTONE SYSTEMS



DRAWING DESCRIPTION:

THIS DETAIL ILLUSTRATES THE REALSTONE SYSTEM INSTALLED AROUND AN INSIDE INTERIOR CORNER. THE REALSTONE CORNER UNITS (SEE SPEC. 2.03-B) ARE SPECIAL STONE UNITS MADE SPECIFICALLY TO OVERLAP AND ALTERNATE AROUND THE CORNER OF THE INTERIOR WALL / OPENING. INSTALL CORNER UNITS FIRST WHEN INSTALLING THE REALSTONE SYSTEM (SEE SPEC. 3.02-E). NOTE THAT THIS WALL ASSEMBLY IS CREATED WITH PLYWOOD SHEATHING. SEE D-23 FOR SPECIFICATIONS REGARDING THE INSTALLATION OF THE MORTAR ON THE PLYWOOD. CEMENT BOARD IS AN ALTERNATIVE TO PLYWOOD ON INTERIOR WALLS.

SHEET NO:  
**D-26**

DRAWING: INT. WALL - INSIDE CORNER - (PLAN)

**realstone SYSTEMS™**  
 Realstone Simply Installed

NOTE: REALSTONE SYSTEMS' DETAILS ARE PROVIDED FOR THE CLARIFICATION OF THE MANUFACTURED PRODUCT, ITS APPLICATIONS AND TO ASSIST IN THE PROCESS OF PROJECT SPECIFIC DETAILS. DESIGN PRINCIPLES AND SPECIFICATIONS INCORPORATED IN THE FINAL DETAILS ARE THE RESPONSIBILITY OF THE PROJECT DESIGN PROFESSIONAL IN COMPLIANCE WITH THE LOCAL BUILDING CODE.

SCALE: 1:5

DATE: 08-12-12