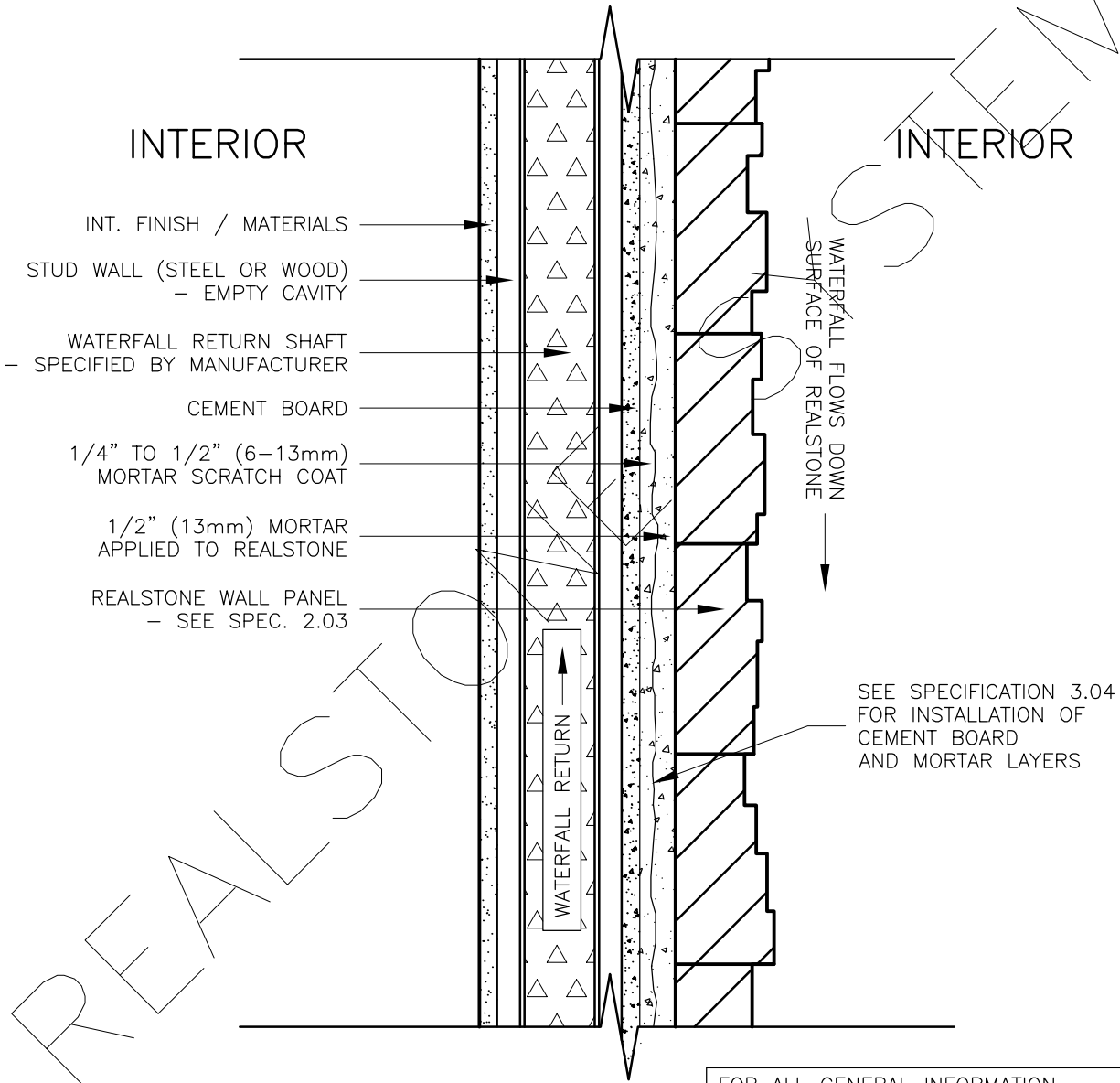


# INTERIOR STUD WALL (CEMENT BOARD) WATERFALL FACADE (SECTION)



REALSTONE SYSTEMS

REALSTONE

FOR ALL GENERAL INFORMATION REGARDING MORTAR MIXES, STONE INSTALLATION AND SEQUENCING, REFER TO MASTER GUIDE SPECIFICATIONS

**DRAWING DESCRIPTION:**

THIS DETAIL ILLUSTRATES THE REALSTONE SYSTEM INSTALLED AS A BACKING SURFACE FOR AN INDOOR WATERFALL. WATER WILL FLOW DOWN THE OUTSIDE FACE OF THE REALSTONE FACADE AND RETURN THROUGH A RETURN SHAFT (SPECIFIED BY MANUFACTURER) LOCATED IN THE WALL CAVITY. CEMENT BOARD IS A SUGGESTED SHEATHING TO PROVIDE A WATERPROOF MEMBRANE FOR THE INSTALLATION OF THE REALSTONE SYSTEM. THE FINAL DESIGN OF THE WATERFALL MECHANISMS (INCLUDING DRAIN AND RETURN AT BASE OF WATERFALL) ARE TO BE SPECIFIED BY THE DESIGN PROFESSIONAL IN COMPLIANCE WITH THE MANUFACTURE'S SPECIFICATIONS AND LOCAL BUILDING CODE.

SHEET NO:  
**D-29**

DRAWING: INT. WALL - WATERFALL - (SECTION)

**realstone SYSTEMS™**  
Realstone Simply Installed

NOTE: REALSTONE SYSTEMS' DETAILS ARE PROVIDED FOR THE CLARIFICATION OF THE MANUFACTURED PRODUCT, ITS APPLICATIONS AND TO ASSIST IN THE PROCESS OF PROJECT SPECIFIC DETAILS. DESIGN PRINCIPLES AND SPECIFICATIONS INCORPORATED IN THE FINAL DETAILS ARE THE RESPONSIBILITY OF THE PROJECT DESIGN PROFESSIONAL IN COMPLIANCE WITH THE LOCAL BUILDING CODE.

SCALE: 1:5

DATE: 08-12-12