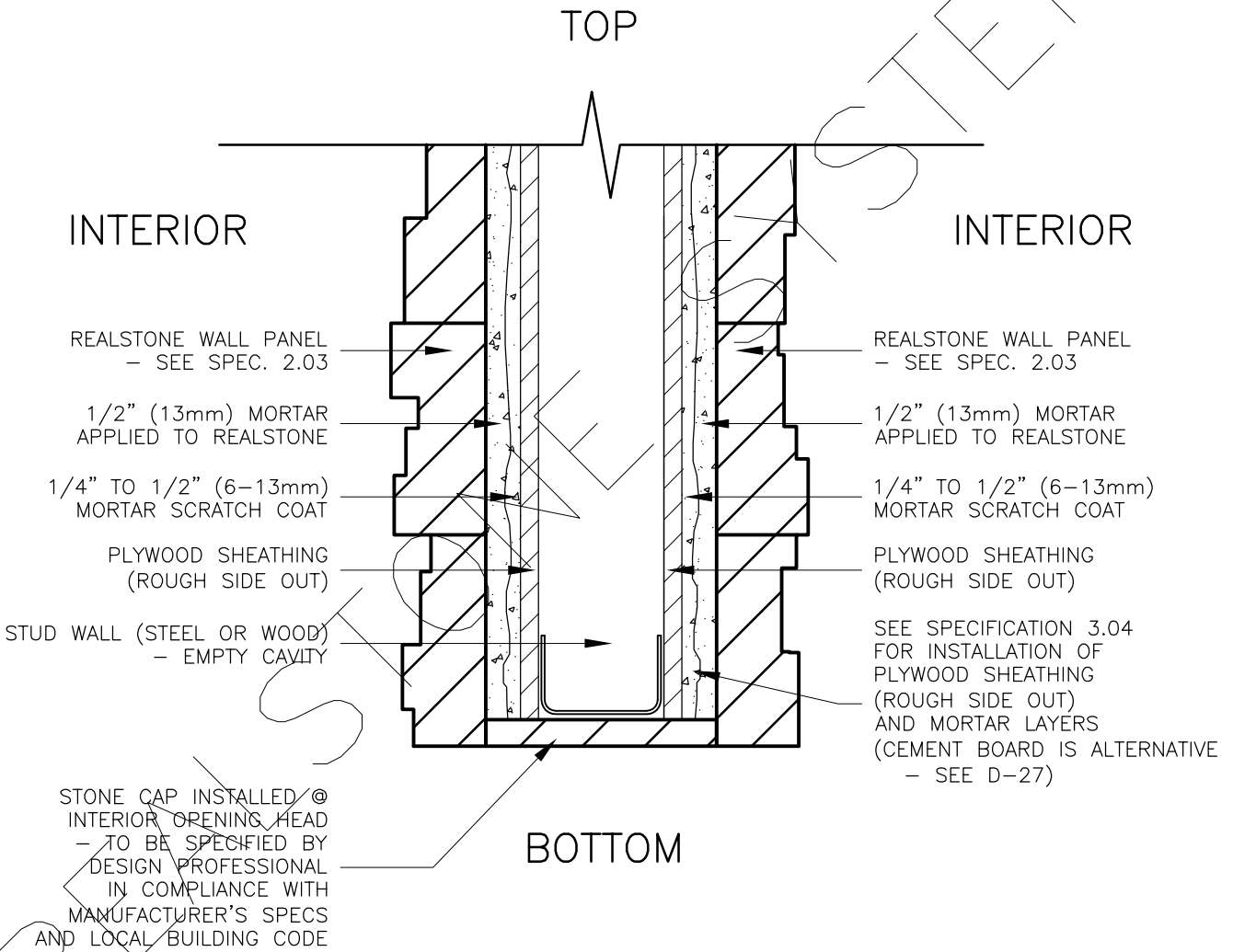


**INTERIOR STUD WALL WITH
PLYWOOD SHEATHING
INTERIOR OPENING HEAD WITH STONE RETURN (SECTION)**

REALSTONE SYSTEMS



FOR ALL GENERAL INFORMATION REGARDING MORTAR MIXES, STONE INSTALLATION AND SEQUENCING, REFER TO MASTER GUIDE SPECIFICATIONS

DRAWING DESCRIPTION:

THIS DETAIL ILLUSTRATES A POTENTIAL INTERIOR OPENING HEAD INTERFACE WITH THE REALSTONE SYSTEM. THIS DETAIL SHOWS A STONE CAP FINISHING AT THE HEAD OF THE OPENING, HOWEVER OTHER FINISHING MATERIALS CAN BE USED DEPENDING ON AESTHETIC PREFERENCE. THE REALSTONE SYSTEM IS USED ON BOTH SIDES OF THE INTERIOR WALL TO CREATE THE ARCHITECTURAL ILLUSION THAT THE WALL IS SOLID STONE. THESE DETAILS SHOULD BE SPECIFIED BY THE DESIGN PROFESSIONAL IN COMPLIANCE WITH ALL MANUFACTURER'S SPECS AND THE LOCAL BUILDING CODE.

SHEET NO:
D-36

DRAWING: INT. OPENING HEAD W/ STONE RETURN (SECTION)

realstone SYSTEMS™
Realstone Simply Installed

NOTE: REALSTONE SYSTEMS' DETAILS ARE PROVIDED FOR THE CLARIFICATION OF THE MANUFACTURED PRODUCT, ITS APPLICATIONS AND TO ASSIST IN THE PROCESS OF PROJECT SPECIFIC DETAILS. DESIGN PRINCIPLES AND SPECIFICATIONS INCORPORATED IN THE FINAL DETAILS ARE THE RESPONSIBILITY OF THE PROJECT DESIGN PROFESSIONAL IN COMPLIANCE WITH THE LOCAL BUILDING CODE.

SCALE: 1:5

DATE: 08-12-12