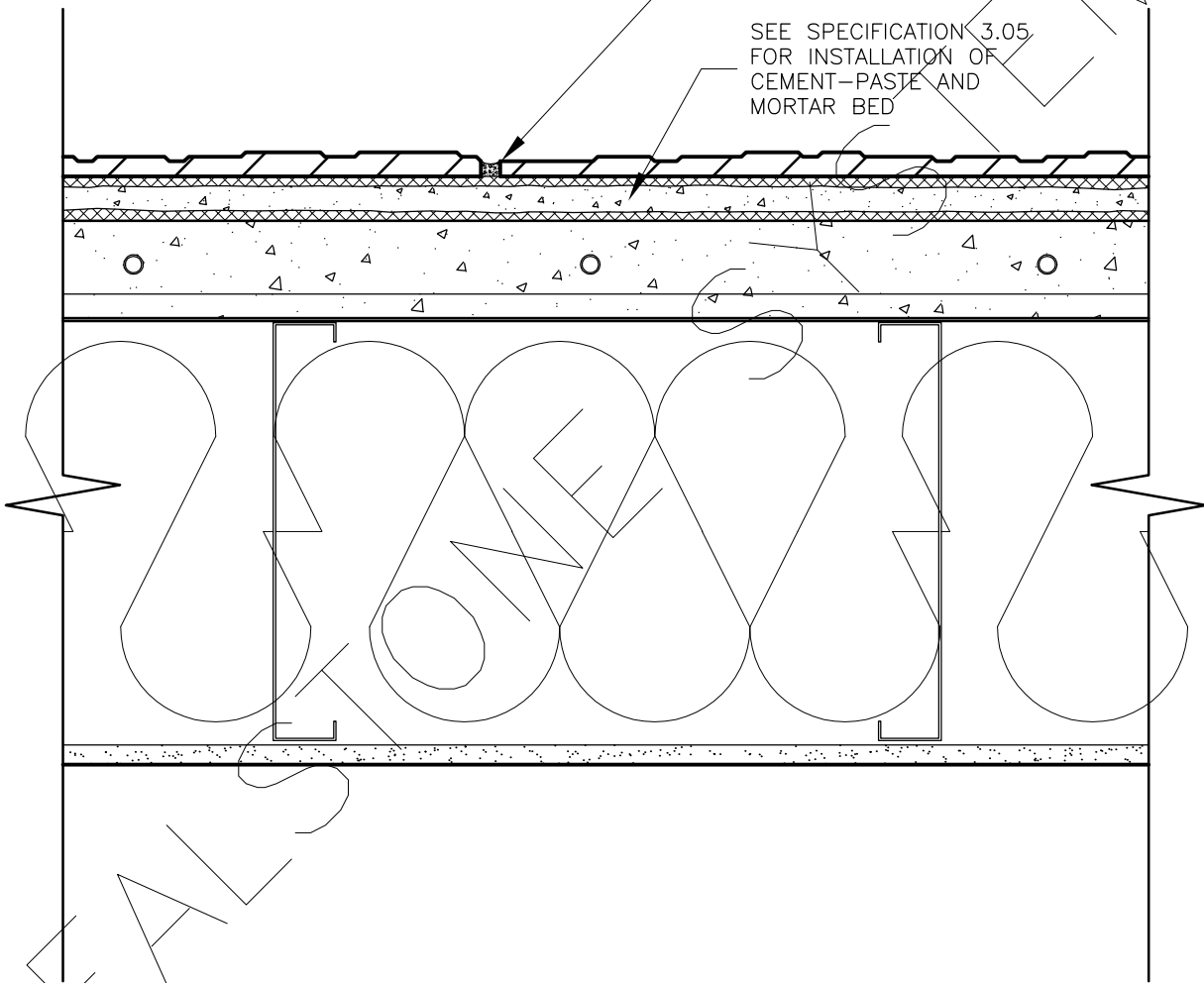


# INTERIOR FRAMED (JOIST) FLOOR WITH MASONRY SUBFLOOR (SECTION)

SEE SPECIFICATION 3.06  
FOR PROPER POINTING OF  
REALSTONE-JOINT SURFACES

SEE SPECIFICATION 3.05  
FOR INSTALLATION OF  
CEMENT-PASTE AND  
MORTAR BED



FOR ALL GENERAL INFORMATION  
REGARDING MORTAR MIXES, STONE  
INSTALLATION AND SEQUENCING, REFER  
TO MASTER GUIDE SPECIFICATIONS

DRAWING DESCRIPTION:

SHEET NO:  
**D-42**

DRAWING: INT. FLOOR W/ MASONRY SUBFLOOR (SECTION)

**realstone SYSTEMS™**  
Realstone Simply Installed

NOTE: REALSTONE SYSTEMS' DETAILS ARE PROVIDED FOR THE CLARIFICATION OF THE MANUFACTURED PRODUCT, ITS APPLICATIONS AND TO ASSIST IN THE PROCESS OF PROJECT SPECIFIC DETAILS. DESIGN PRINCIPLES AND SPECIFICATIONS INCORPORATED IN THE FINAL DETAILS ARE THE RESPONSIBILITY OF THE PROJECT DESIGN PROFESSIONAL IN COMPLIANCE WITH THE LOCAL BUILDING CODE.

SCALE: 1:5

DATE: 08-12-12