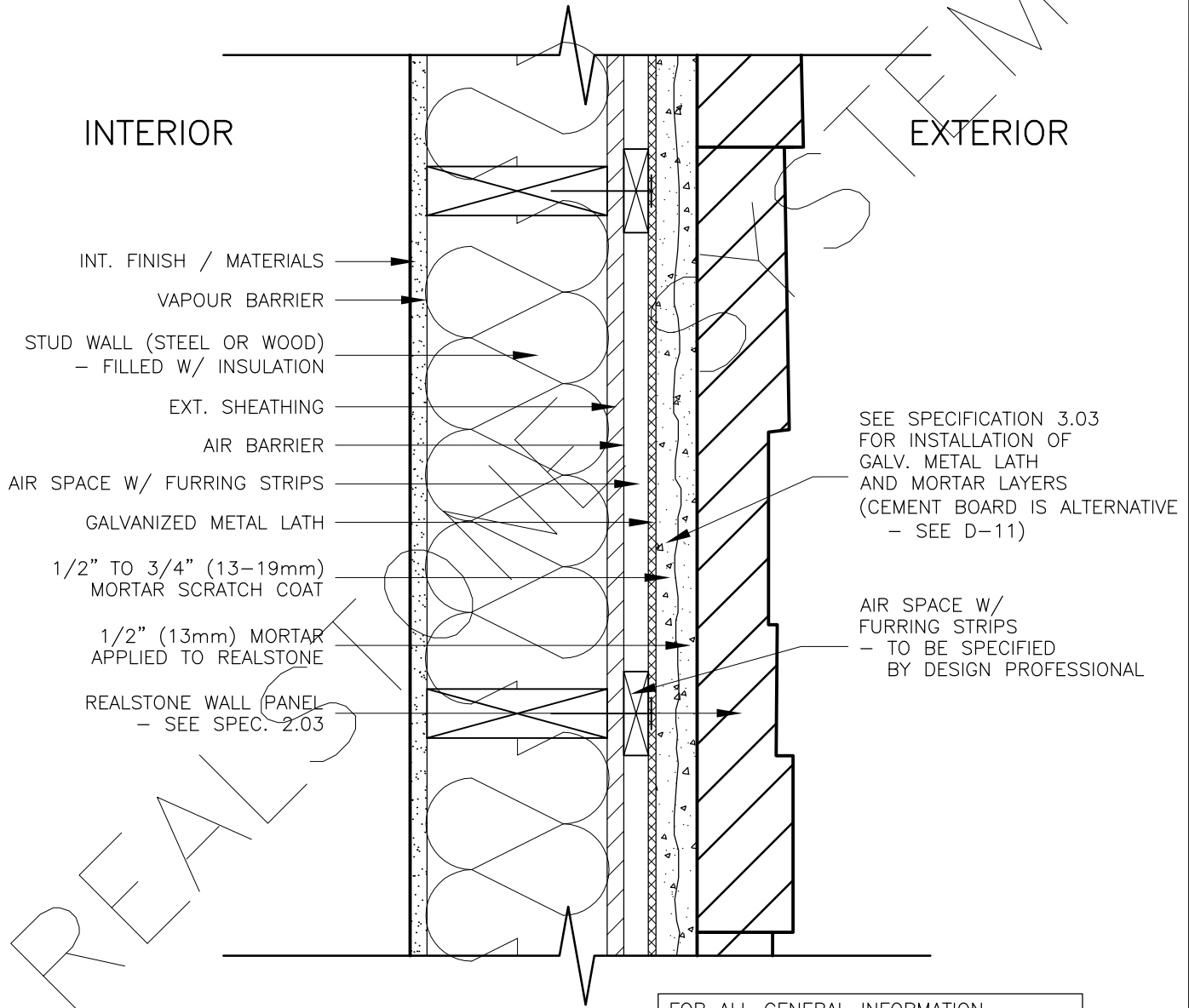


# EXTERIOR STUD WALL (METAL LATH) WITH PRESSURE EQUALIZED RAIN SCREEN (PLAN)



SEE SPECIFICATION 3.03  
FOR INSTALLATION OF  
GALV. METAL LATH  
AND MORTAR LAYERS  
(CEMENT BOARD IS ALTERNATIVE  
- SEE D-11)

AIR SPACE W/  
FURRING STRIPS  
- TO BE SPECIFIED  
BY DESIGN PROFESSIONAL

FOR ALL GENERAL INFORMATION  
REGARDING MORTAR MIXES, STONE  
INSTALLATION AND SEQUENCING, REFER  
TO MASTER GUIDE SPECIFICATIONS

**DRAWING DESCRIPTION:**

THIS DETAIL ILLUSTRATES THE REALSTONE SYSTEM INSTALLED WITH A PRESSURE EQUALIZED RAIN SCREEN CAVITY IN THE WALL. THE RAIN SCREEN IS THE AIR CAVITY, TYPICALLY A 1/2" - 1" (13-25mm) SPACE CREATED BY FURRING STRIPS, BETWEEN THE AIR BARRIER AND EXTERIOR CLADDING (REALSTONE). AN OPENING IS PROVIDED AT THE BOTTOM OF THE RAIN SCREEN WALL (SEE D-16) TO ALLOW FOR AIR TO ENTER AND MOISTURE TO ESCAPE. THIS AIR FILLED CAVITY CREATES A PRESSURIZED CAVITY, PREVENTING MOISTURE FROM ENTERING THE WALL SYSTEM. IF MOISTURE ENTERS THE WALL SYSTEM, THE CAVITY THEN ACTS AS A DRAINAGE LAYER ALLOWING MOISTURE TO DRAIN.

SHEET NO:  
**D-02**

DRAWING: **EXT. WALL W/ RAIN SCREEN (PLAN)**

**realstone SYSTEMS™**  
Realstone Simply Installed

**NOTE:** REALSTONE SYSTEMS' DETAILS ARE PROVIDED FOR THE CLARIFICATION OF THE MANUFACTURED PRODUCT, ITS APPLICATIONS AND TO ASSIST IN THE PROCESS OF PROJECT SPECIFIC DETAILS. DESIGN PRINCIPLES AND SPECIFICATIONS INCORPORATED IN THE FINAL DETAILS ARE THE RESPONSIBILITY OF THE PROJECT DESIGN PROFESSIONAL IN COMPLIANCE WITH THE LOCAL BUILDING CODE.

SCALE: **1:5**

DATE: **08-12-12**