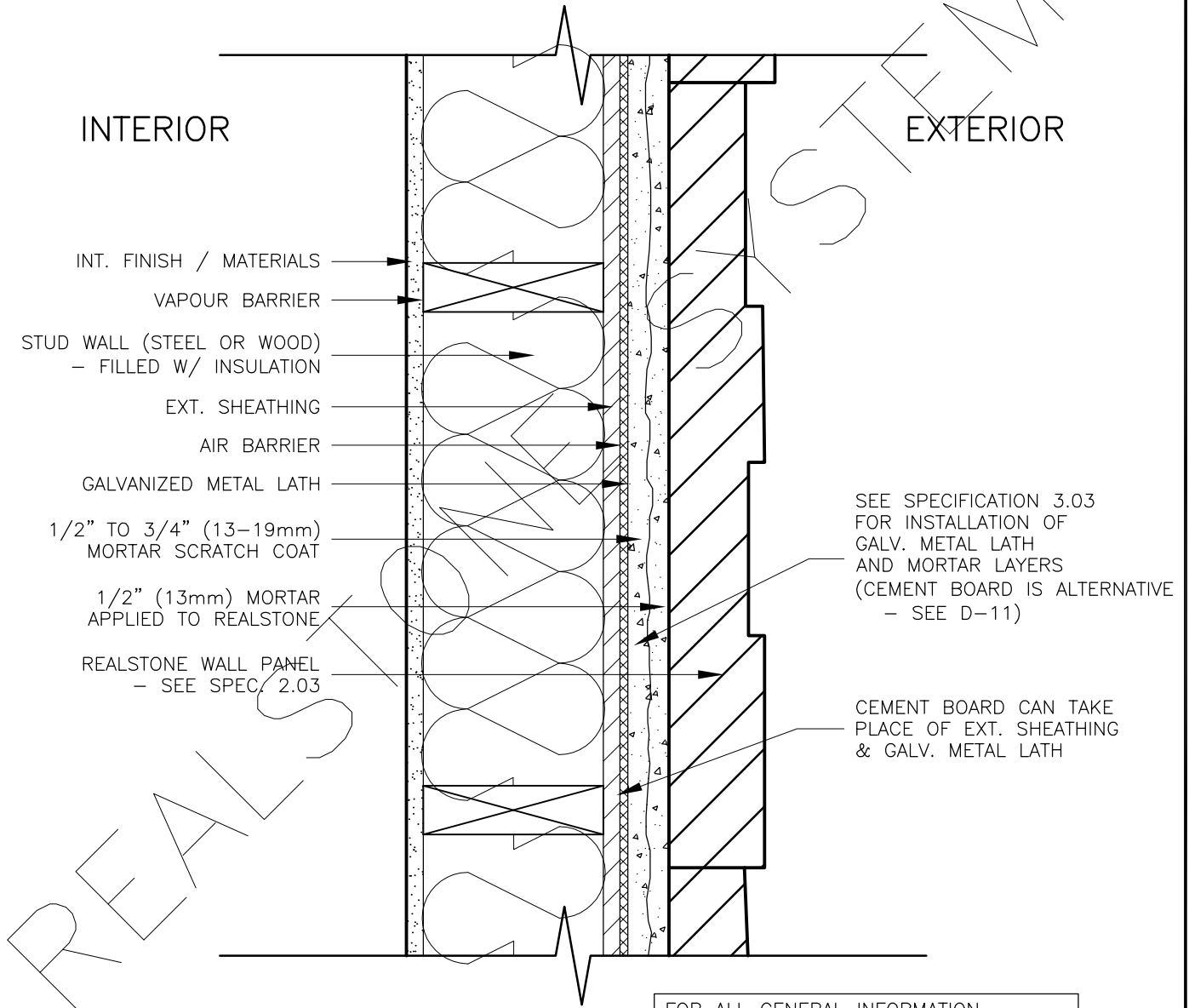


EXTERIOR STUD WALL (METAL LATH) WITHOUT PRESSURE EQUALIZED RAIN SCREEN (PLAN)



SEE SPECIFICATION 3.03 FOR INSTALLATION OF GALV. METAL LATH AND MORTAR LAYERS (CEMENT BOARD IS ALTERNATIVE - SEE D-11)

CEMENT BOARD CAN TAKE PLACE OF EXT. SHEATHING & GALV. METAL LATH

FOR ALL GENERAL INFORMATION REGARDING MORTAR MIXES, STONE INSTALLATION AND SEQUENCING, REFER TO MASTER GUIDE SPECIFICATIONS

DRAWING DESCRIPTION:

THIS DETAIL ILLUSTRATES THE REALSTONE SYSTEM INSTALLED WITHOUT A PRESSURE EQUALIZED RAIN SCREEN CAVITY IN THE WALL. A WALL WITHOUT A RAIN SCREEN CAN RESULT IN MOISTURE BEING TRAPPED INSIDE THE WALL, CAUSING POTENTIAL MOISTURE DAMAGE AND MOLD. MOST CONTEMPARY WALL SYSTEMS USE THE RAIN SCREEN TECHNOLOGY. IT IS IMPORTANT TO NOTE ON THIS DETAIL, THAT THE SHEATHING AND METAL LATH CAN BE REPLACED WITH CEMENT BOARD (SEE D-11). THE AIR BARRIER REMAINS IN BOTH CIRCUMSTANCES. CEMENT BOARD COULD SIMPLIFY THE WALL SYSTEM AND REDUCE THE MATERIALS USED.

SHEET NO:
D-04

DRAWING: **EXT. WALL W/OUT RAIN SCREEN (PLAN)**

realstone SYSTEMS™
Realstone Simply Installed

NOTE: REALSTONE SYSTEMS' DETAILS ARE PROVIDED FOR THE CLARIFICATION OF THE MANUFACTURED PRODUCT, ITS APPLICATIONS AND TO ASSIST IN THE PROCESS OF PROJECT SPECIFIC DETAILS. DESIGN PRINCIPLES AND SPECIFICATIONS INCORPORATED IN THE FINAL DETAILS ARE THE RESPONSIBILITY OF THE PROJECT DESIGN PROFESSIONAL IN COMPLIANCE WITH THE LOCAL BUILDING CODE.

SCALE: **1:5**

DATE: **08-12-12**