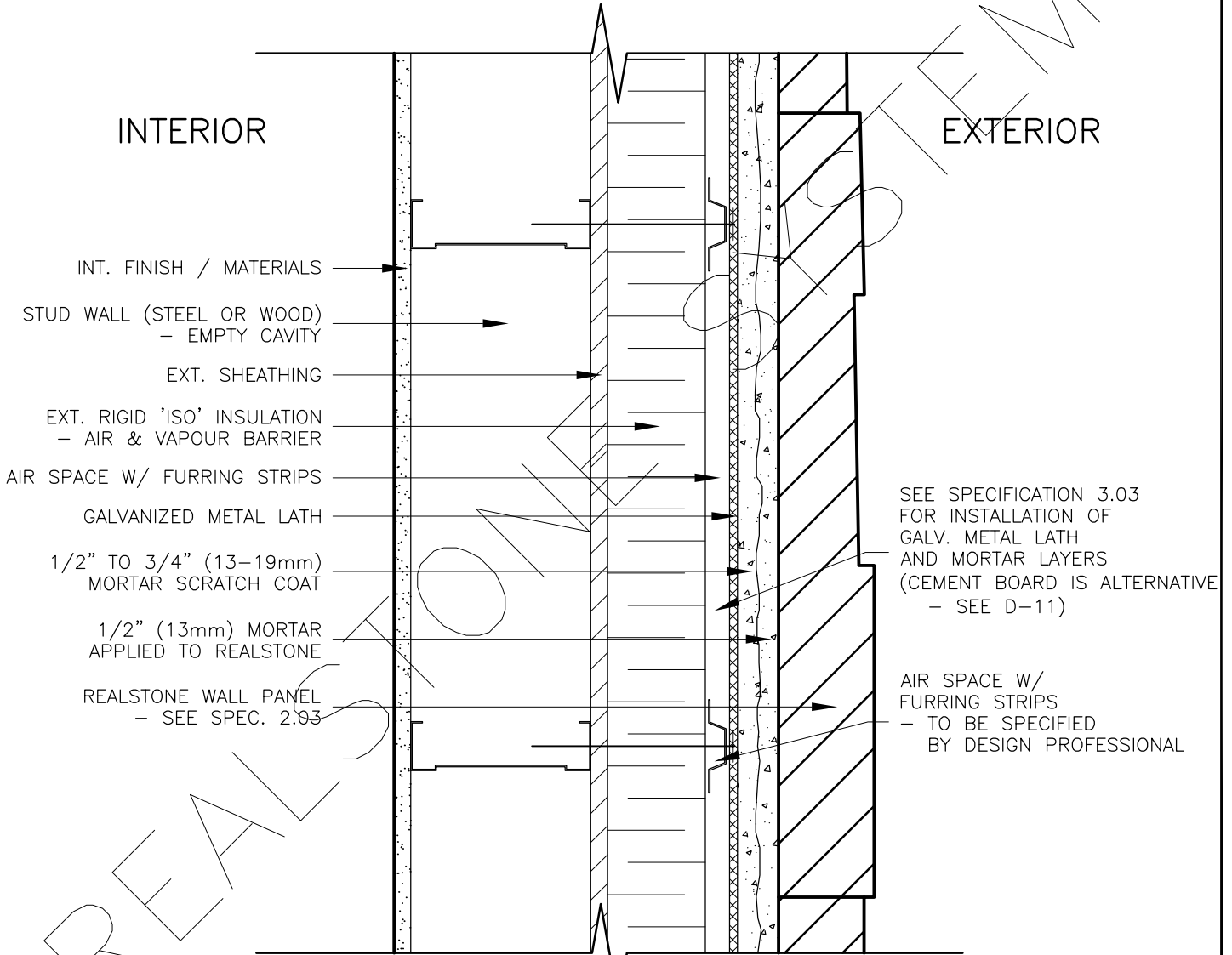


**EXTERIOR STUD WALL (METAL LATH) WITH
EXT. INSULATION & PRESSURE EQUALIZED RAIN SCREEN
SUPER 'E' WALL ASSEMBLY (PLAN)**



SEE SPECIFICATION 3.03
FOR INSTALLATION OF
GALV. METAL LATH
AND MORTAR LAYERS
(CEMENT BOARD IS ALTERNATIVE
- SEE D-11)

AIR SPACE W/
FURRING STRIPS
- TO BE SPECIFIED
BY DESIGN PROFESSIONAL

FOR ALL GENERAL INFORMATION
REGARDING MORTAR MIXES, STONE
INSTALLATION AND SEQUENCING, REFER
TO MASTER GUIDE SPECIFICATIONS

DRAWING DESCRIPTION:

THIS DETAIL ILLUSTRATES THE REALSTONE SYSTEM INSTALLED ON A SUPER 'E' WALL ASSEMBLY. THE SUPER 'E' WALL IS A CANADIAN INNOVATION IN HIGH ENERGY EFFICIENCY AND HEALTHY HOUSING TECHNOLOGY, AND IS MARKeted GLOBALLY. THE EXTERIOR INSULATION (ISOCYANURATE) PREVENTS THERMAL BRIDGING FROM OCCURRING THROUGH STUDS AND PROVIDES A CONTINUOUS VAPOUR AND AIR BARRIER. THE RAIN SCREEN IS THE AIR CAVITY BETWEEN THE EXT. INSULATION AND EXTERIOR CLADDING (REALSTONE). THE RAIN SCREEN PREVENTS MOISTURE FROM ENTERING THE WALL, HOWEVER IF MOISTURE DOES ENTER THE WALL, IT ALSO ACTS AS A DRAINAGE SYSTEM.

SHEET NO:
D-06

DRAWING: **EXT. WALL W/ EXT. INSUL & RAIN SCREEN (PLAN)**

realstone SYSTEMS™
Realstone Simply Installed

NOTE: REALSTONE SYSTEMS' DETAILS ARE PROVIDED FOR THE CLARIFICATION OF THE MANUFACTURED PRODUCT, ITS APPLICATIONS AND TO ASSIST IN THE PROCESS OF PROJECT SPECIFIC DETAILS. DESIGN PRINCIPLES AND SPECIFICATIONS INCORPORATED IN THE FINAL DETAILS ARE THE RESPONSIBILITY OF THE PROJECT DESIGN PROFESSIONAL IN COMPLIANCE WITH THE LOCAL BUILDING CODE.

SCALE: **1:5**

DATE: **08-12-12**