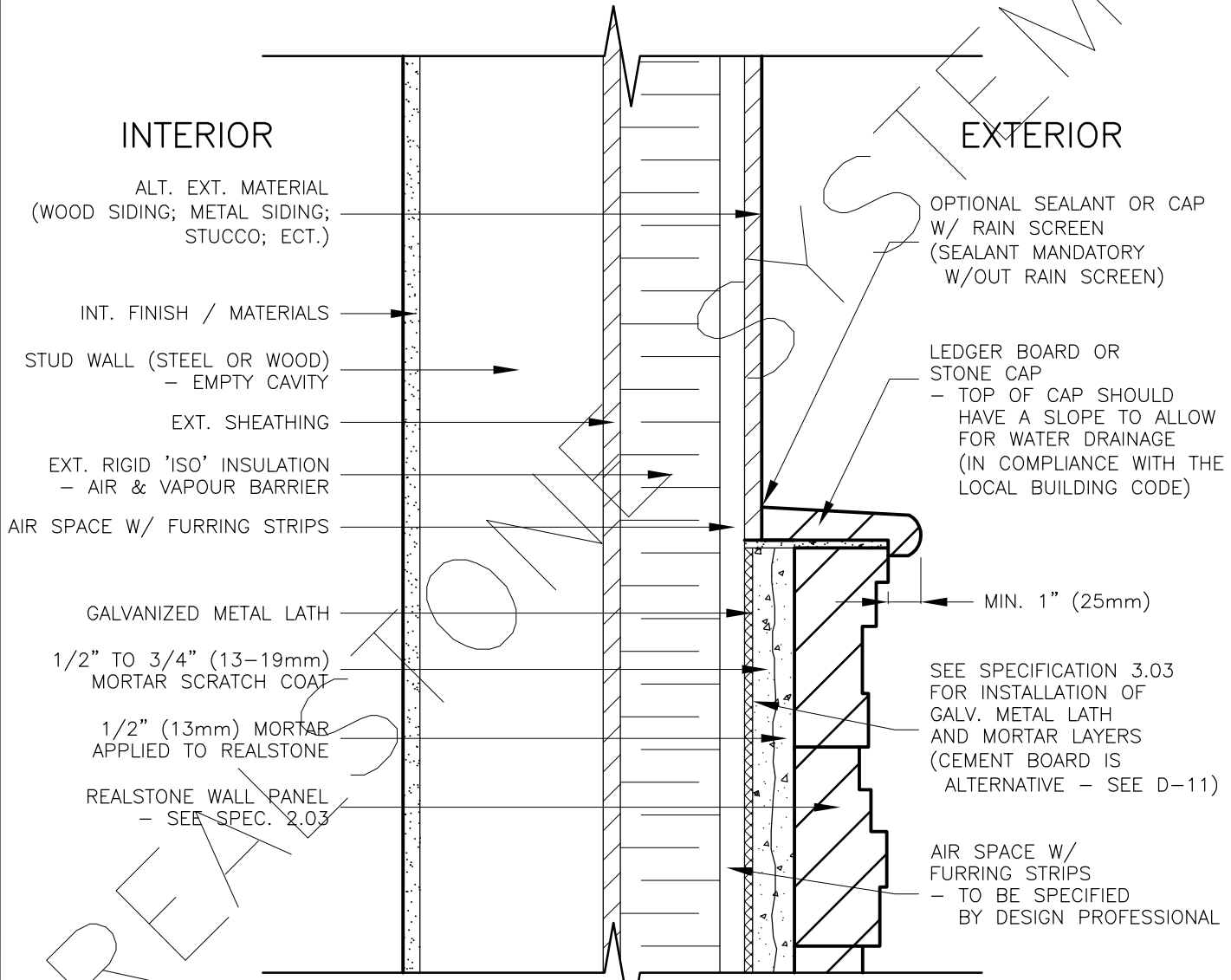


**EXTERIOR STUD WALL (METAL LATH) WITH
SUPER 'E' WALL ASSEMBLY
EXTERIOR MATERIAL INTERFACE (SECTION)**



FOR ALL GENERAL INFORMATION REGARDING MORTAR MIXES, STONE INSTALLATION AND SEQUENCING, REFER TO MASTER GUIDE SPECIFICATIONS

DRAWING DESCRIPTION:

THIS DETAIL ILLUSTRATES THE EXTERIOR INTERFACE BETWEEN THE REALSTONE SYSTEM AND ANOTHER EXTERIOR MATERIAL. THE DETAIL IS A SUPER 'E' WALL ASSEMBLY SO THE RAIN SCREEN CAVITY CAN REMAIN CONTINUOUS THROUGH THE INTERFACE BETWEEN EXTERIOR MATERIALS (FLASHING IS NOT REQUIRED). THE REALSTONE SYSTEM SHOULD BE CAPPED AT THE TOP, SIDE OR BOTTOM OF THE INTERFACE (DETAIL INDICATES A TOP CAP OR LEDGER BOARD). THE INSTALLATION OF EXTERIOR MATERIALS, OTHER THAN THE REALSTONE SYSTEM, SHOULD COMPLY WITH THE MANUFACTURER'S STANDARDS AND THE LOCAL BUILDING CODE.

SHEET NO:
D-15

DRAWING: **EXT. WALL - MATERIAL INTERFACE - (SECTION)**



NOTE: REALSTONE SYSTEMS' DETAILS ARE PROVIDED FOR THE CLARIFICATION OF THE MANUFACTURED PRODUCT, ITS APPLICATIONS AND TO ASSIST IN THE PROCESS OF PROJECT SPECIFIC DETAILS. DESIGN PRINCIPLES AND SPECIFICATIONS INCORPORATED IN THE FINAL DETAILS ARE THE RESPONSIBILITY OF THE PROJECT DESIGN PROFESSIONAL IN COMPLIANCE WITH THE LOCAL BUILDING CODE.

SCALE: **1:5**

DATE: **08-12-12**