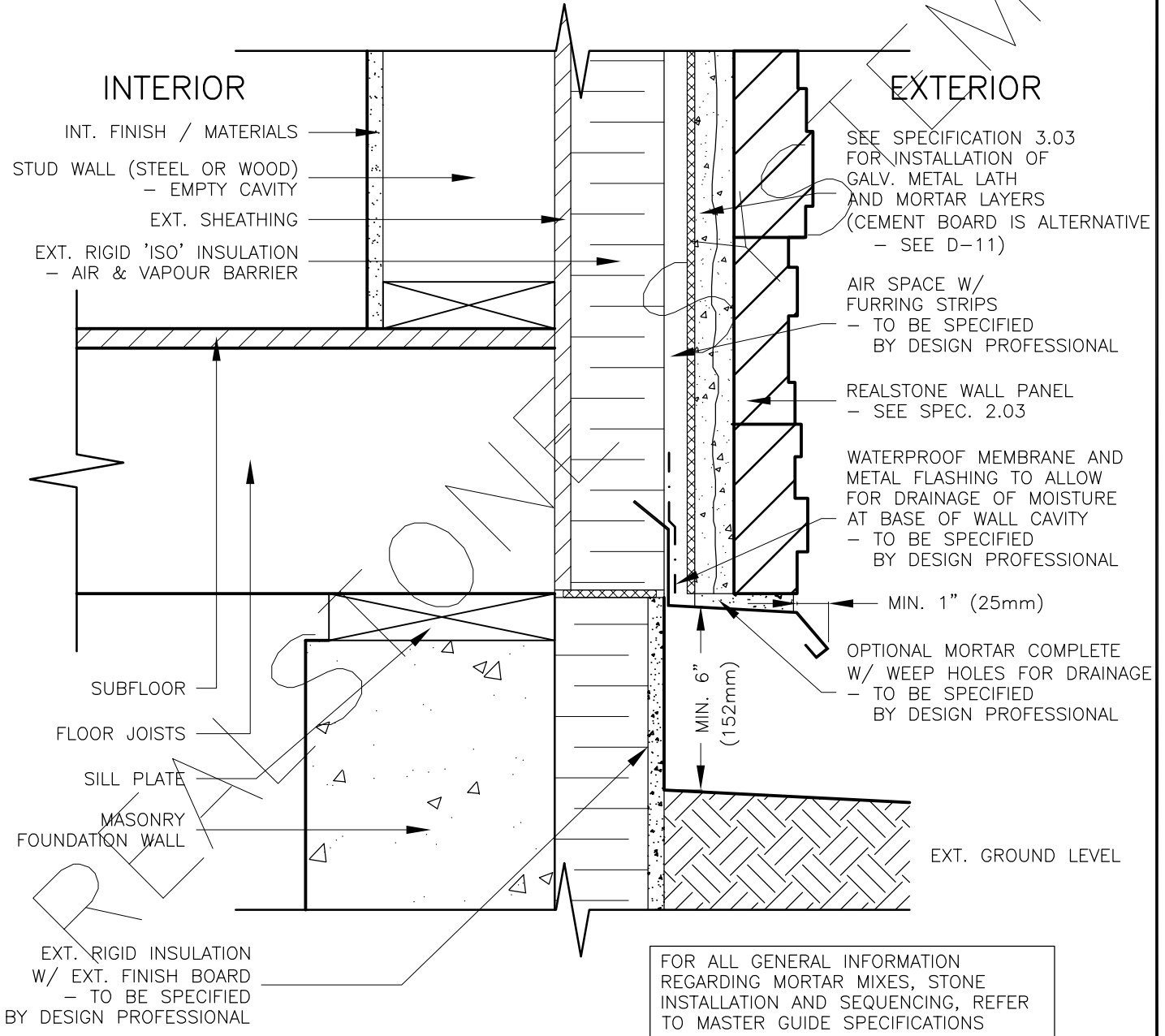


EXTERIOR STUD WALL (METAL LATH) WITH SUPER 'E' WALL ASSEMBLY DRAINAGE AT BASE OF RAIN SCREEN CAVITY (SECTION)



DRAWING DESCRIPTION:

THIS DETAIL ILLUSTRATES A POTENTIAL DRAINAGE SYSTEM AT THE BASE OF A RAIN SCREEN WALL CAVITY. THE BASE OF A RAIN SCREEN WALL CAVITY MUST ALLOW FOR THE DRAINAGE OF MOISTURE TO OCCUR AWAY FROM THE FOUNDATION OF THE BUILDING. THIS DETAIL HAS THE REALSTONE SYSTEM STOPPING AT THE TOP OF THE MASONRY FOUNDATION WALL AND DRAINAGE TO OCCUR DIRECTLY UNDERNEATH THE REALSTONE SYSTEM. PROPER FLASHING, WATERPROOF MEMBRANE, AND FOUNDATION MATERIALS (FOUNDATION HAS CONTINUOUS INSULATION - SUPER 'E' WALL ASSEMBLY) TO BE SPECIFIED BY A DESIGN PROFESSIONAL IN COMPLIANCE WITH THE LOCAL BUILDING CODE.

SHEET NO:

D-16

DRAWING: EXT. WALL @ BASE OF RAIN SCREEN (SECTION)

realstone SYSTEMS™

Realstone Simply Installed

NOTE: REALSTONE SYSTEMS' DETAILS ARE PROVIDED FOR THE CLARIFICATION OF THE MANUFACTURED PRODUCT, ITS APPLICATIONS AND TO ASSIST IN THE PROCESS OF PROJECT SPECIFIC DETAILS. DESIGN PRINCIPLES AND SPECIFICATIONS INCORPORATED IN THE FINAL DETAILS ARE THE RESPONSIBILITY OF THE PROJECT DESIGN PROFESSIONAL IN COMPLIANCE WITH THE LOCAL BUILDING CODE.

SCALE: 1:5

DATE: 08-12-12