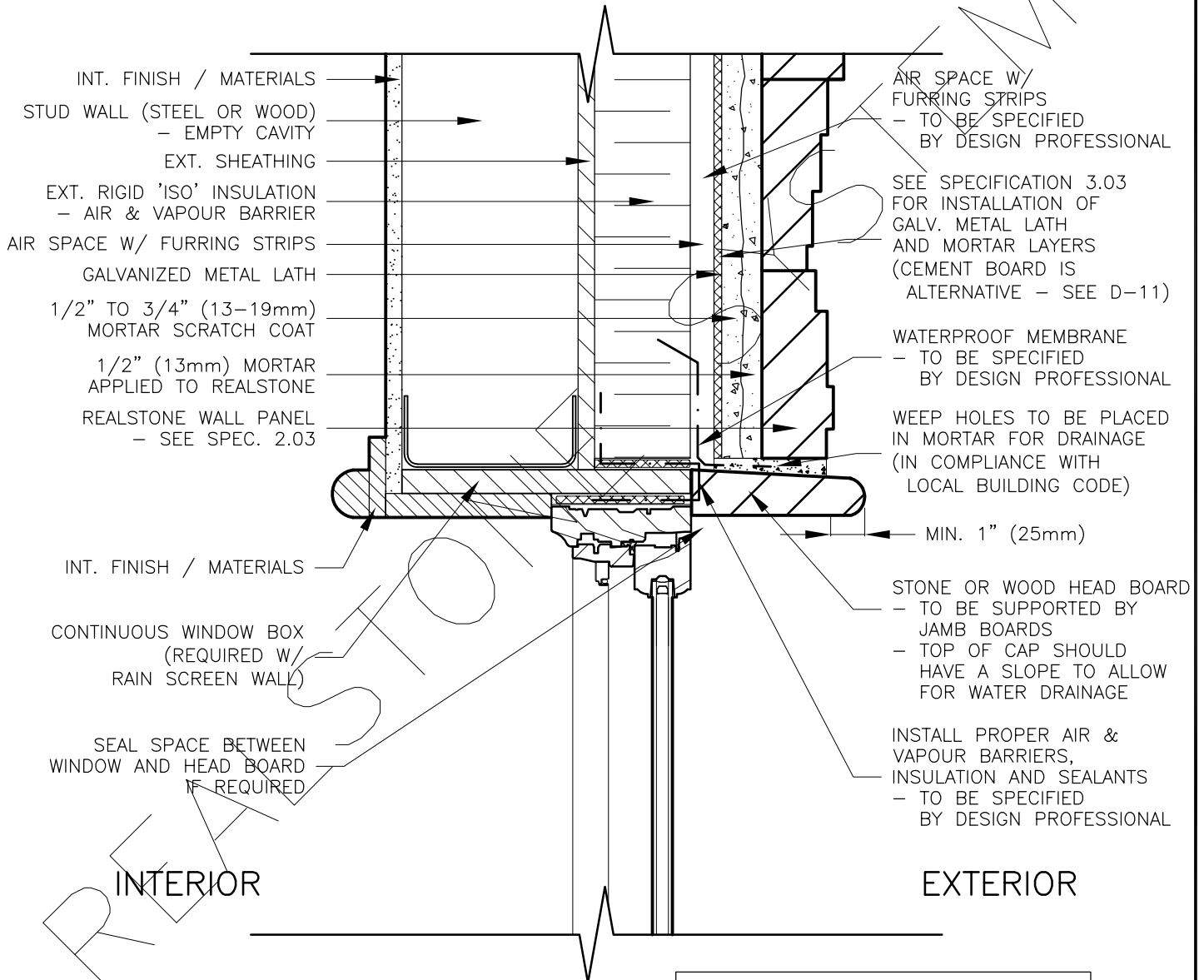


# EXTERIOR STUD WALL (METAL LATH) WITH SUPER 'E' WALL ASSEMBLY WINDOW/DOOR HEAD WITH HEAD BOARD (SECTION)



FOR ALL GENERAL INFORMATION REGARDING MORTAR MIXES, STONE INSTALLATION AND SEQUENCING, REFER TO MASTER GUIDE SPECIFICATIONS

**DRAWING DESCRIPTION:**

THIS DETAIL ILLUSTRATES A POTENTIAL WINDOW/DOOR HEAD INTERFACE WITH THE REALSTONE SYSTEM. A STONE OR WOOD HEAD BOARD IS SHOWN, HOWEVER, OTHER EXTERIOR MATERIALS CAN BE USED AT THE HEAD INTERFACE DEPENDING ON AESTHETIC PREFERENCE. PROPER SEALANTS, INSULATIONS, AND AIR & VAPOUR BARRIERS SHOULD BE INSTALLED. DRAINAGE IS ALSO REQUIRED AT THE TOP OF THE HEAD BOARD (DRAINAGE FOR RAIN SCREEN CAVITY). WEEP HOLES IN THE MORTAR ARE SUGGESTED. THESE DETAILS SHOULD BE SPECIFIED BY THE DESIGN PROFESSIONAL IN COMPLIANCE WITH THE LOCAL BUILDING CODE.

SHEET NO:  
**D-19**

DRAWING: **WINDOW/DOOR HEAD - HEAD BOARD - (SECTION)**

**realstone SYSTEMS™**  
Realstone Simply Installed

**NOTE:** REALSTONE SYSTEMS' DETAILS ARE PROVIDED FOR THE CLARIFICATION OF THE MANUFACTURED PRODUCT, ITS APPLICATIONS AND TO ASSIST IN THE PROCESS OF PROJECT SPECIFIC DETAILS. DESIGN PRINCIPLES AND SPECIFICATIONS INCORPORATED IN THE FINAL DETAILS ARE THE RESPONSIBILITY OF THE PROJECT DESIGN PROFESSIONAL IN COMPLIANCE WITH THE LOCAL BUILDING CODE.

SCALE: **1:5**

DATE: **08-12-12**