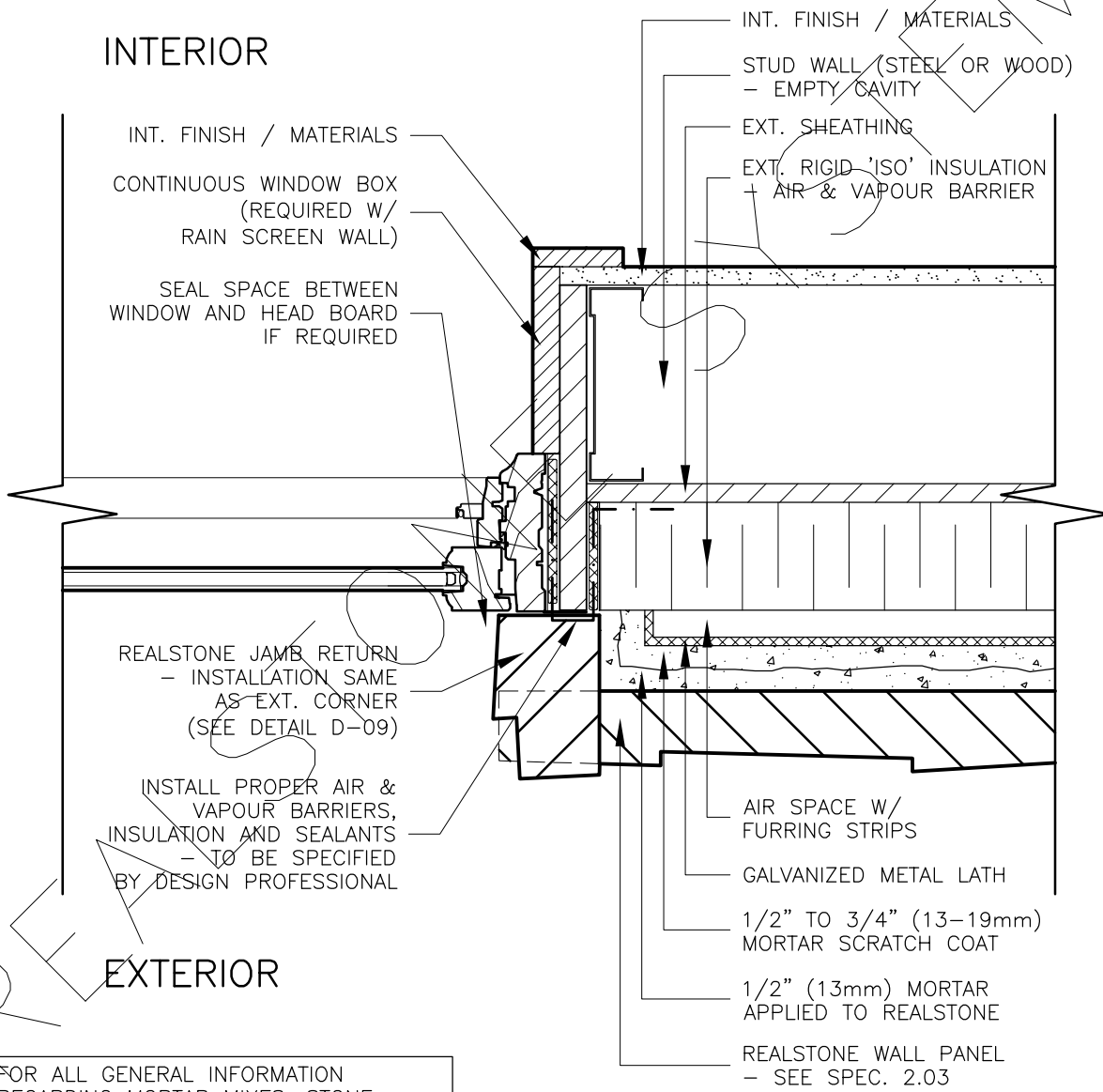


**EXTERIOR STUD WALL (METAL LATH) WITH
SUPER 'E' WALL ASSEMBLY
WINDOW/DOOR JAMB WITH STONE RETURN (PLAN)**



FOR ALL GENERAL INFORMATION REGARDING MORTAR MIXES, STONE INSTALLATION AND SEQUENCING, REFER TO MASTER GUIDE SPECIFICATIONS

DRAWING DESCRIPTION:

THIS DETAIL ILLUSTRATES A POTENTIAL WINDOW/DOOR JAMB INTERFACE WITH THE REALSTONE SYSTEM. A REALSTONE JAMB RETURN IS SHOWN, WHICH IS SIMILAR TO AN EXTERIOR CORNER RETURN (D-09). THE REALSTONE CORNER UNITS (SEE SPEC. 2.03-B) WILL HAVE TO BE CUT (SEE SPEC. 3.02-B) TO FIT THE WINDOW JAMB. THE WINDOW JAMB CAN BE A SUPPORT FOR THE WINDOW HEAD BOARD (SPECIFIED BY DESIGN PROFESSIONAL). PROPER SEALANTS, INSULATIONS, AND AIR & VAPOUR BARRIERS SHOULD BE INSTALLED. THESE DETAILS SHOULD BE SPECIFIED BY THE DESIGN PROFESSIONAL IN COMPLIANCE WITH THE LOCAL BUILDING CODE.

SHEET NO:
D-21

DRAWING: **WINDOW/DOOR JAMB - JAMB BOARD - (PLAN)**

realstone SYSTEMS™
Realstone Simply Installed

NOTE: REALSTONE SYSTEMS' DETAILS ARE PROVIDED FOR THE CLARIFICATION OF THE MANUFACTURED PRODUCT, ITS APPLICATIONS AND TO ASSIST IN THE PROCESS OF PROJECT SPECIFIC DETAILS. DESIGN PRINCIPLES AND SPECIFICATIONS INCORPORATED IN THE FINAL DETAILS ARE THE RESPONSIBILITY OF THE PROJECT DESIGN PROFESSIONAL IN COMPLIANCE WITH THE LOCAL BUILDING CODE.

SCALE: **1:5**

DATE: **08-12-12**