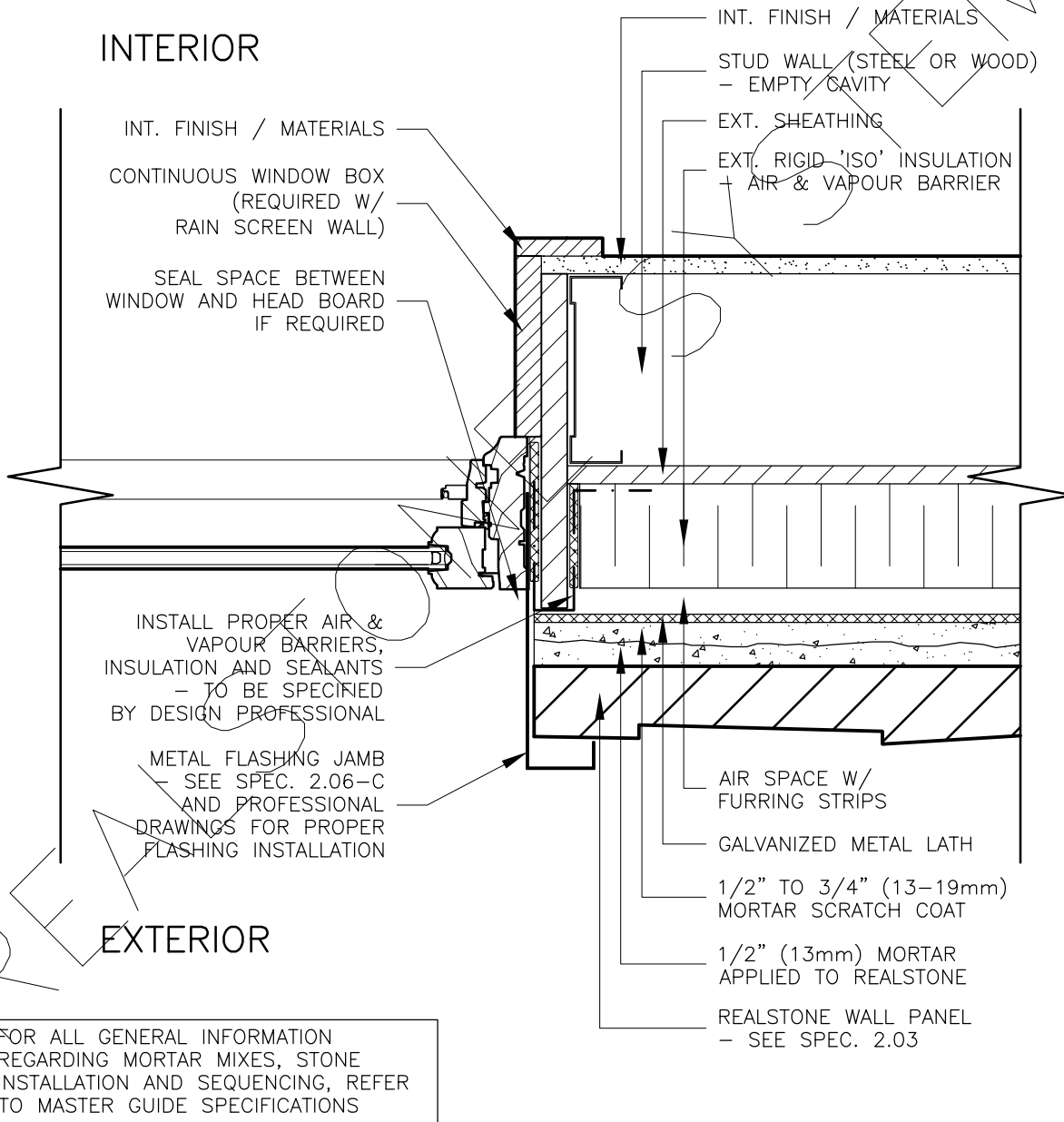


EXTERIOR STUD WALL (METAL LATH) WITH SUPER 'E' WALL ASSEMBLY WINDOW/DOOR JAMB WITH FLASHING (PLAN)



DRAWING DESCRIPTION:

THIS DETAIL ILLUSTRATES A WINDOW/DOOR FLASHING JAMB INTERFACE WITH THE REALSTONE SYSTEM. A METAL FLASHING JAMB IS SHOWN, HOWEVER, OTHER EXTERIOR MATERIALS CAN BE USED AT THE JAMB INTERFACE DEPENDING ON AESTHETIC PREFERENCE. PROPER SEALANTS, INSULATIONS, AND AIR & VAPOUR BARRIERS SHOULD BE INSTALLED. THESE DETAILS SHOULD BE SPECIFIED BY THE DESIGN PROFESSIONAL IN COMPLIANCE WITH THE LOCAL BUILDING CODE.

SHEET NO:
D-22

DRAWING: **WINDOW/DOOR JAMB - FLASHING - (PLAN)**

realstone SYSTEMS™
Realstone Simply Installed

NOTE: REALSTONE SYSTEMS' DETAILS ARE PROVIDED FOR THE CLARIFICATION OF THE MANUFACTURED PRODUCT, ITS APPLICATIONS AND TO ASSIST IN THE PROCESS OF PROJECT SPECIFIC DETAILS. DESIGN PRINCIPLES AND SPECIFICATIONS INCORPORATED IN THE FINAL DETAILS ARE THE RESPONSIBILITY OF THE PROJECT DESIGN PROFESSIONAL IN COMPLIANCE WITH THE LOCAL BUILDING CODE.

SCALE: **1:5**

DATE: **08-12-12**