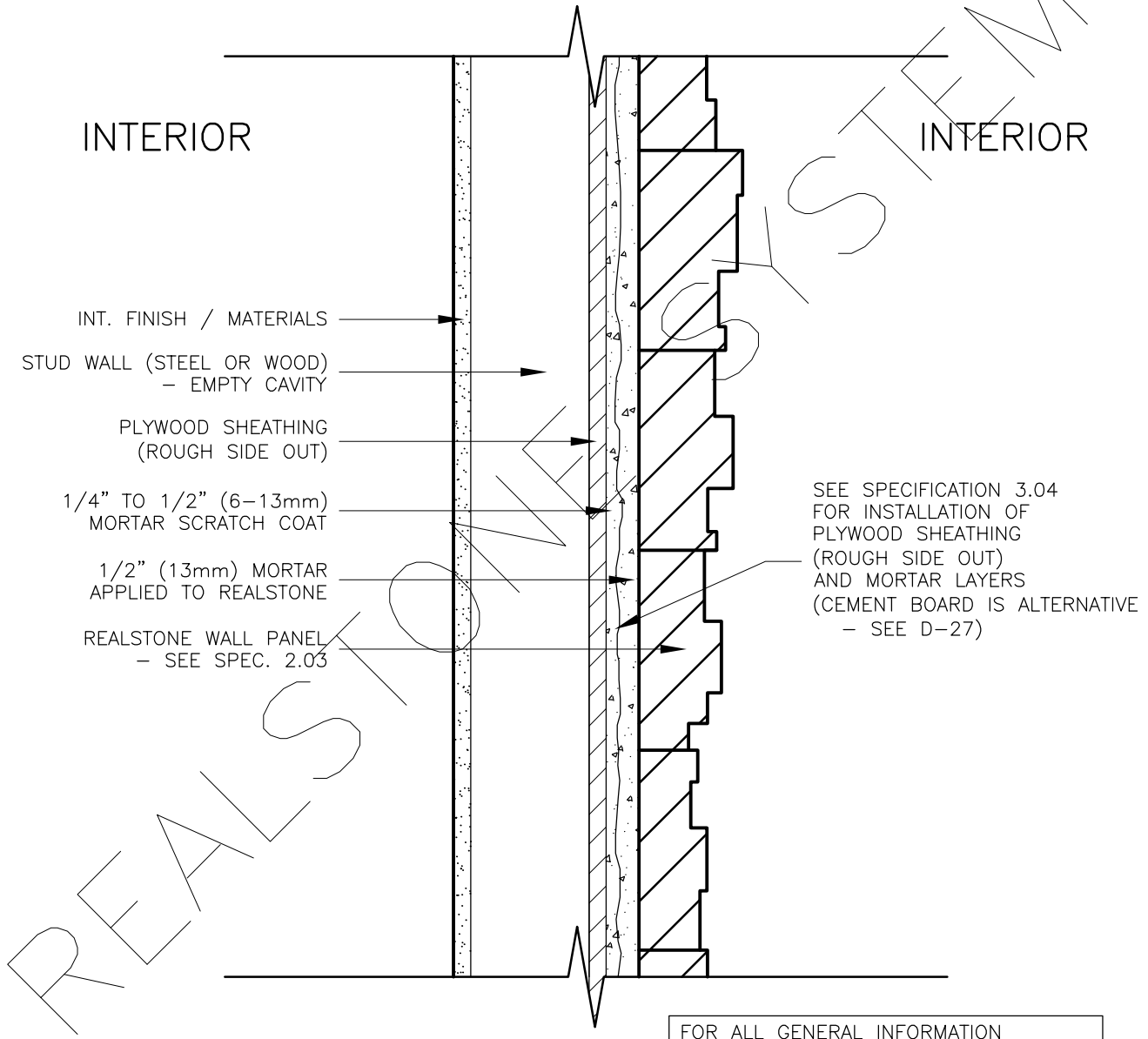


INTERIOR STUD WALL WITH PLYWOOD SHEATHING (SECTION)



FOR ALL GENERAL INFORMATION REGARDING MORTAR MIXES, STONE INSTALLATION AND SEQUENCING, REFER TO MASTER GUIDE SPECIFICATIONS

DRAWING DESCRIPTION:

THIS DETAIL ILLUSTRATES THE REALSTONE SYSTEM INSTALLED ON AN INTERIOR WALL WITH PLYWOOD SHEATHING. THE PLYWOOD SHEATHING HAS A ROUGH AND SMOOTH SURFACE. THE ROUGH SURFACE SHOULD BE FACING THE MORTAR LAYERS. THIS ROUGH SURFACE PROVIDES THE SCRATCH COAT WITH A SURFACE TO ADHERE TO. THE MORTAR INSTALLATION FOR THE PLYWOOD SHEATHING IS THE SAME AS A CEMENT BOARD OR MASONRY WALL (SEE SPEC. 3.04). CEMENT BOARD IS AN ALTERNATIVE FOR PLYWOOD ON INTERIOR WALLS.

SHEET NO:
D-23

DRAWING: INTERIOR WALL W/ PLYWOOD (SECTION)

realstone SYSTEMS™
Realstone Simply Installed

NOTE: REALSTONE SYSTEMS' DETAILS ARE PROVIDED FOR THE CLARIFICATION OF THE MANUFACTURED PRODUCT, ITS APPLICATIONS AND TO ASSIST IN THE PROCESS OF PROJECT SPECIFIC DETAILS. DESIGN PRINCIPLES AND SPECIFICATIONS INCORPORATED IN THE FINAL DETAILS ARE THE RESPONSIBILITY OF THE PROJECT DESIGN PROFESSIONAL IN COMPLIANCE WITH THE LOCAL BUILDING CODE.

SCALE: 1:5

DATE: 08-12-12