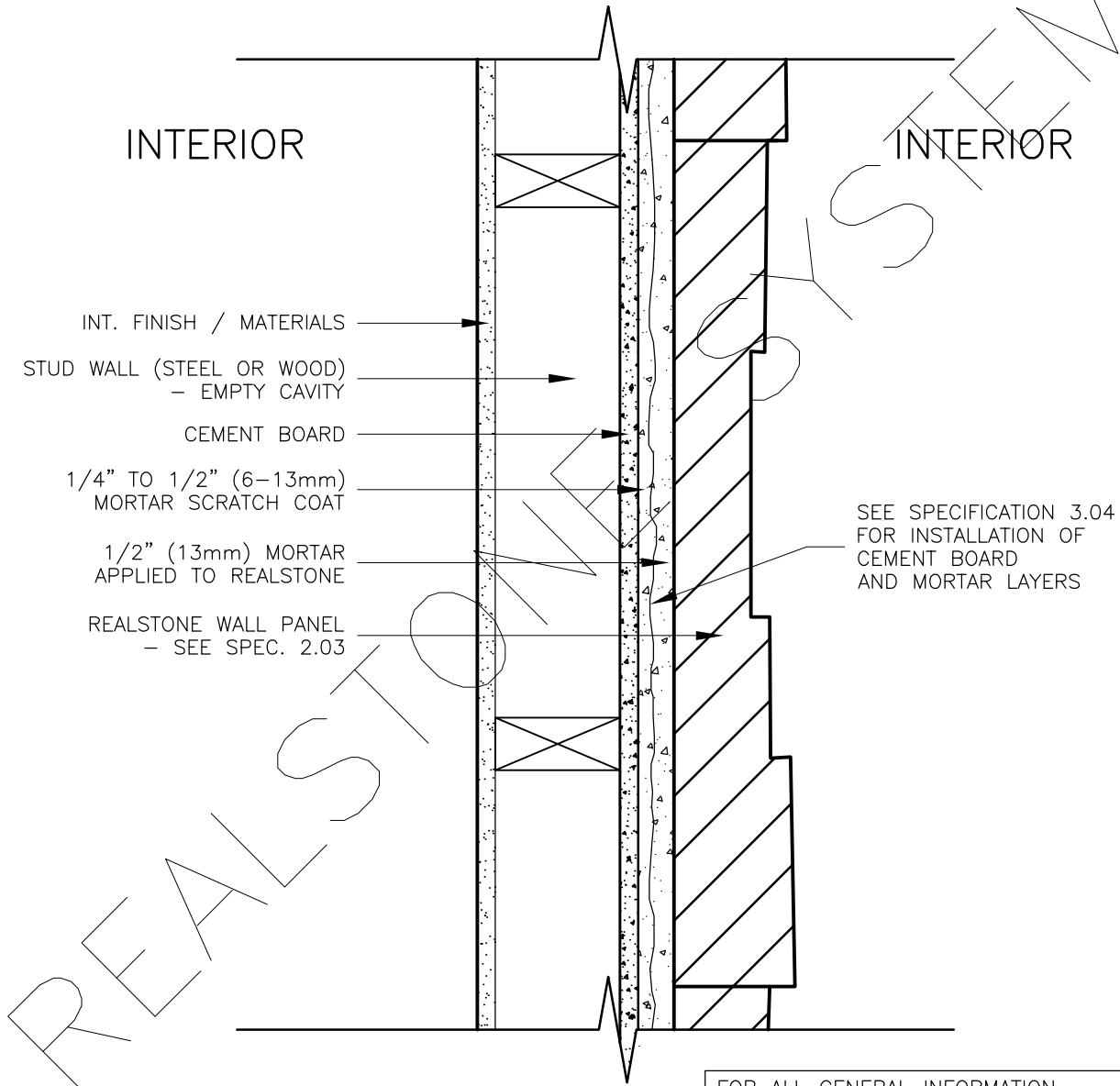


INTERIOR STUD WALL WITH CEMENT BOARD SHEATHING (PLAN)



- INT. FINISH / MATERIALS
- STUD WALL (STEEL OR WOOD)
- EMPTY CAVITY
- CEMENT BOARD
- 1/4" TO 1/2" (6-13mm)
MORTAR SCRATCH COAT
- 1/2" (13mm) MORTAR
APPLIED TO REALSTONE
- REALSTONE WALL PANEL
- SEE SPEC. 2.03

SEE SPECIFICATION 3.04
FOR INSTALLATION OF
CEMENT BOARD
AND MORTAR LAYERS

FOR ALL GENERAL INFORMATION
REGARDING MORTAR MIXES, STONE
INSTALLATION AND SEQUENCING, REFER
TO MASTER GUIDE SPECIFICATIONS

DRAWING DESCRIPTION:

THIS DETAIL ILLUSTRATES THE REALSTONE SYSTEM INSTALLED ON AN INTERIOR WALL WITH CEMENT BOARD SHEATHING. THE MORTAR INSTALLATION FOR THE INTERIOR CEMENT BOARD SHEATHING IS THE SAME AS THE EXTERIOR CEMENT BOARD WALL ASSEMBLY (SEE SPEC. 3.04). CEMENT BOARD IS OFTEN USED IN INTERIOR AREAS WHERE A WATERPROOF SURFACE IS REQUIRED (BATHROOMS, KITCHENS, ECT.). PLYWOOD SHEATHING IS AN ALTERNATIVE FOR CEMENT BOARD ON INTERIOR WALLS.

SHEET NO:
D-28

DRAWING: INT. WALL W/ CEMENT BOARD (PLAN)

realstone SYSTEMS™
Realstone Simply Installed

NOTE: REALSTONE SYSTEMS' DETAILS ARE PROVIDED FOR THE CLARIFICATION OF THE MANUFACTURED PRODUCT, ITS APPLICATIONS AND TO ASSIST IN THE PROCESS OF PROJECT SPECIFIC DETAILS. DESIGN PRINCIPLES AND SPECIFICATIONS INCORPORATED IN THE FINAL DETAILS ARE THE RESPONSIBILITY OF THE PROJECT DESIGN PROFESSIONAL IN COMPLIANCE WITH THE LOCAL BUILDING CODE.

SCALE: **1:5**

DATE: **08-12-12**