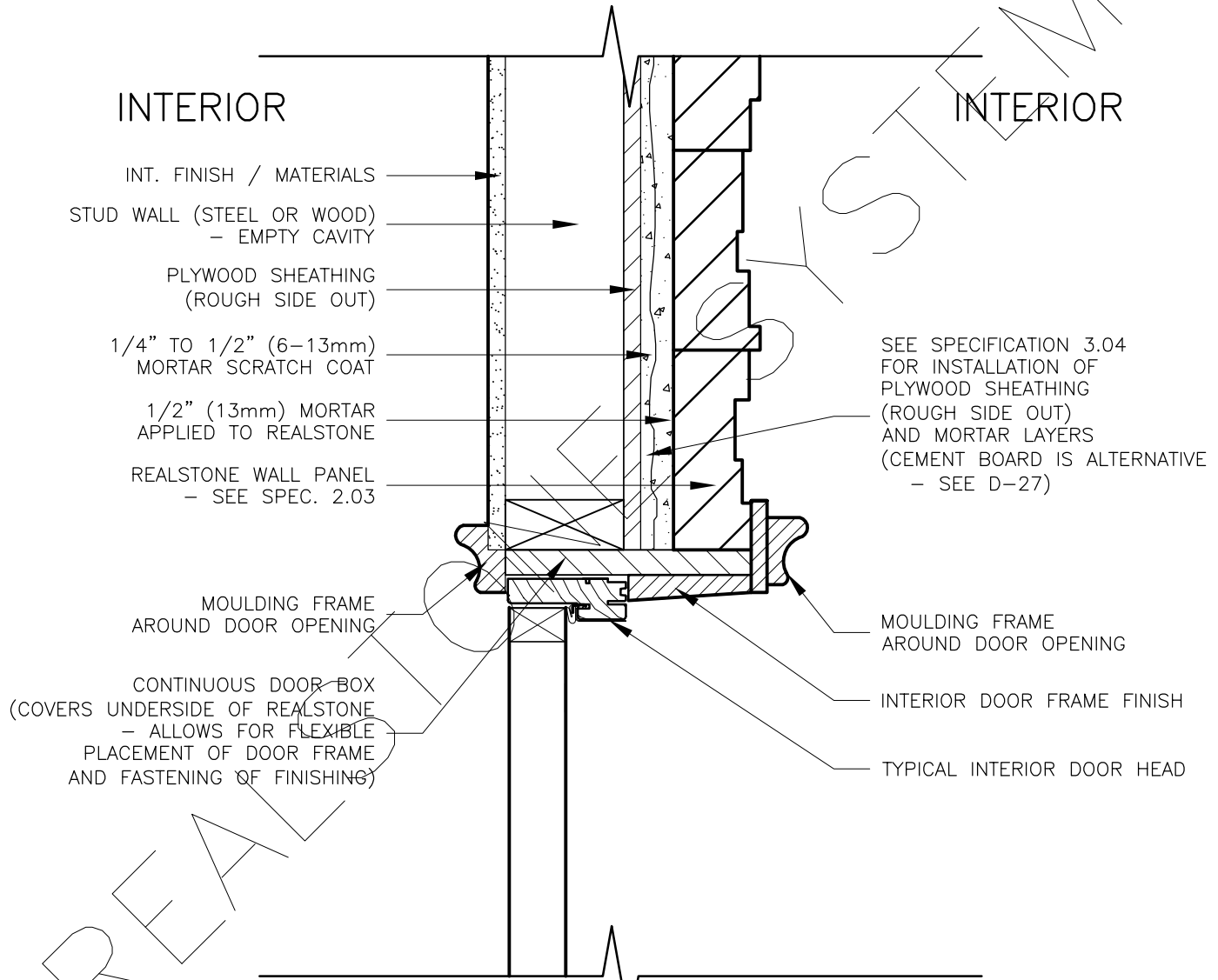


INTERIOR STUD WALL WITH PLYWOOD SHEATHING DOOR HEAD WITH MOULDING FRAME (SECTION)



CONTINUOUS DOOR BOX
(COVERS UNDERSIDE OF REALSTONE
- ALLOWS FOR FLEXIBLE
PLACEMENT OF DOOR FRAME
AND FASTENING OF FINISHING)

SEE SPECIFICATION 3.04
FOR INSTALLATION OF
PLYWOOD SHEATHING
(ROUGH SIDE OUT)
AND MORTAR LAYERS
(CEMENT BOARD IS ALTERNATIVE
- SEE D-27)

FOR ALL GENERAL INFORMATION
REGARDING MORTAR MIXES, STONE
INSTALLATION AND SEQUENCING, REFER
TO MASTER GUIDE SPECIFICATIONS

DRAWING DESCRIPTION:
THIS DETAIL ILLUSTRATES A POTENTIAL INTERIOR DOOR HEAD INTERFACE WITH THE REALSTONE SYSTEM. THIS DETAIL SHOWS A CONTINUOUS MOULDING FRAME (WOOD, CAST, ECT.) WRAPPING AROUND THE OUTSIDE AND INSIDE OF THE DOOR FRAME AND OPENING. A CONTINUOUS DOOR BOX IS INSTALLED INSIDE THE OPENING TO ALLOW FOR FLEXIBLE PLACEMENT OF DOOR FRAME AND PROPER FASTENING OF MOULDING AND FINISHING. OTHER FINISHING MATERIALS CAN BE USED AT THE INTERIOR DOOR HEAD INTERFACE DEPENDING ON AESTHETIC PREFERENCE. THESE DETAILS SHOULD BE SPECIFIED BY THE DESIGN PROFESSIONAL IN COMPLIANCE WITH THE LOCAL BUILDING CODE.

SHEET NO:
D-34

DRAWING: INT. DOOR HEAD W/ MOULDING (SECTION)

realstone SYSTEMS™
Realstone Simply Installed

NOTE: REALSTONE SYSTEMS' DETAILS ARE PROVIDED FOR THE CLARIFICATION OF THE MANUFACTURED PRODUCT, ITS APPLICATIONS AND TO ASSIST IN THE PROCESS OF PROJECT SPECIFIC DETAILS. DESIGN PRINCIPLES AND SPECIFICATIONS INCORPORATED IN THE FINAL DETAILS ARE THE RESPONSIBILITY OF THE PROJECT DESIGN PROFESSIONAL IN COMPLIANCE WITH THE LOCAL BUILDING CODE.

SCALE: **1:5**

DATE: **08-12-12**