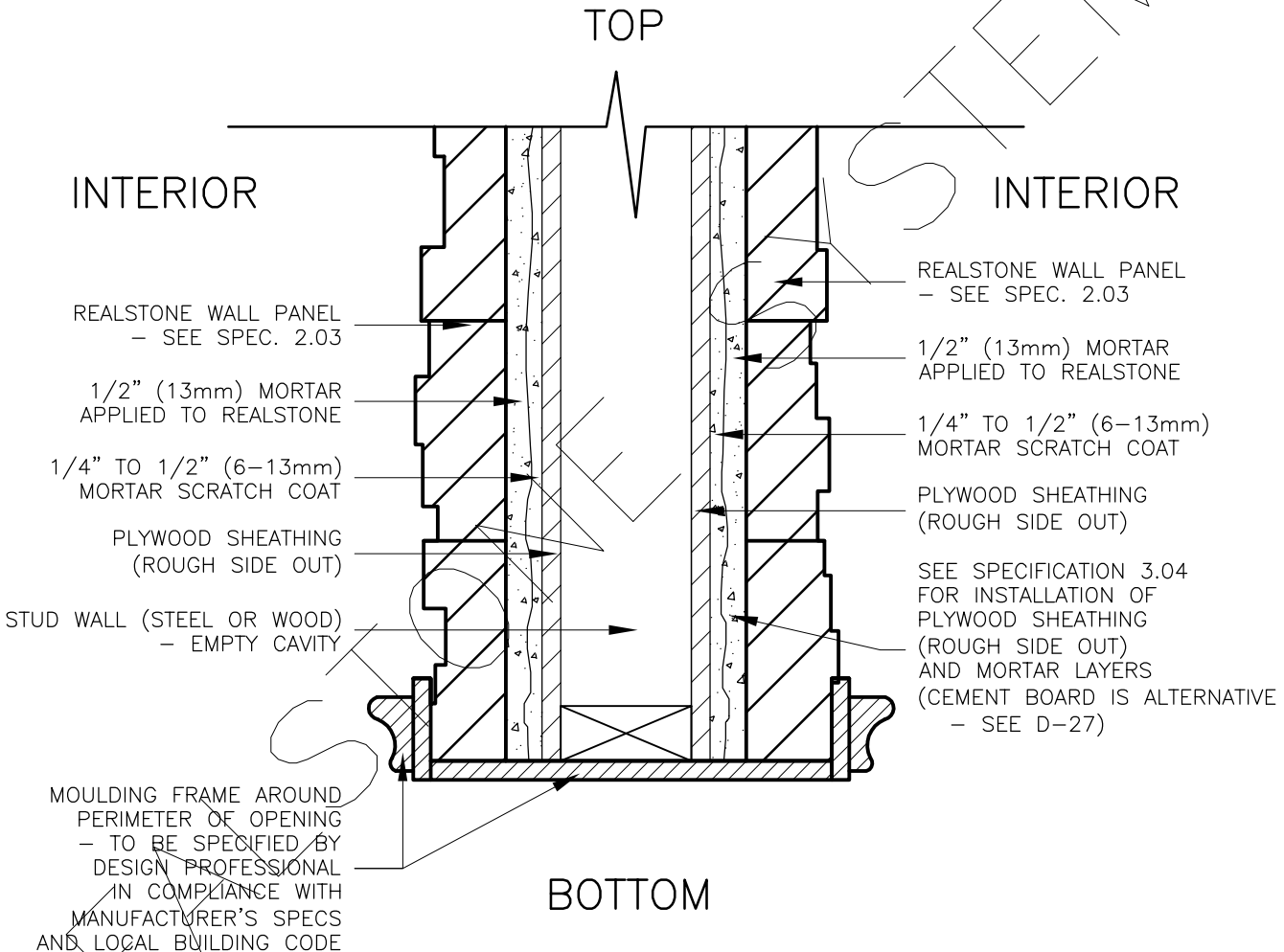


# INTERIOR STUD WALL WITH PLYWOOD SHEATHING INTERIOR OPENING HEAD WITH MOULDING FRAME (SECTION)

REALSTONE SYSTEMS



INTERIOR

REALSTONE WALL PANEL  
- SEE SPEC. 2.03

1/2" (13mm) MORTAR  
APPLIED TO REALSTONE

1/4" TO 1/2" (6-13mm)  
MORTAR SCRATCH COAT

PLYWOOD SHEATHING  
(ROUGH SIDE OUT)

STUD WALL (STEEL OR WOOD)  
- EMPTY CAVITY

MOULDING FRAME AROUND  
PERIMETER OF OPENING  
- TO BE SPECIFIED BY  
DESIGN PROFESSIONAL  
IN COMPLIANCE WITH  
MANUFACTURER'S SPECS  
AND LOCAL BUILDING CODE

INTERIOR

REALSTONE WALL PANEL  
- SEE SPEC. 2.03

1/2" (13mm) MORTAR  
APPLIED TO REALSTONE

1/4" TO 1/2" (6-13mm)  
MORTAR SCRATCH COAT

PLYWOOD SHEATHING  
(ROUGH SIDE OUT)

SEE SPECIFICATION 3.04  
FOR INSTALLATION OF  
PLYWOOD SHEATHING  
(ROUGH SIDE OUT)  
AND MORTAR LAYERS  
(CEMENT BOARD IS ALTERNATIVE  
- SEE D-27)

BOTTOM

FOR ALL GENERAL INFORMATION REGARDING MORTAR MIXES, STONE INSTALLATION AND SEQUENCING, REFER TO MASTER GUIDE SPECIFICATIONS

**DRAWING DESCRIPTION:**

THIS DETAIL ILLUSTRATES A POTENTIAL INTERIOR OPENING HEAD INTERFACE WITH THE REALSTONE SYSTEM. THIS DETAIL SHOWS A CONTINUOUS MOULDING FRAME (WOOD, CAST, ECT.) WRAPPING AROUND THE PERIMETER OF THE OPENING, HOWEVER OTHER FINISHING MATERIALS CAN BE USED DEPENDING ON AESTHETIC PREFERENCE. THE REALSTONE SYSTEM IS USED ON BOTH SIDES OF THE INTERIOR WALL TO CREATE THE ARCHITECTURAL ILLUSION THAT THE WALL IS SOLID STONE. THESE DETAILS SHOULD BE SPECIFIED BY THE DESIGN PROFESSIONAL IN COMPLIANCE WITH ALL MANUFACTURER'S SPECS AND THE LOCAL BUILDING CODE.

SHEET NO:  
**D-38**

DRAWING: INT. OPENING HEAD W/ MOULDING (SECTION)

realstone SYSTEMS™

Realstone Simply Installed

NOTE: REALSTONE SYSTEMS' DETAILS ARE PROVIDED FOR THE CLARIFICATION OF THE MANUFACTURED PRODUCT, ITS APPLICATIONS AND TO ASSIST IN THE PROCESS OF PROJECT SPECIFIC DETAILS. DESIGN PRINCIPLES AND SPECIFICATIONS INCORPORATED IN THE FINAL DETAILS ARE THE RESPONSIBILITY OF THE PROJECT DESIGN PROFESSIONAL IN COMPLIANCE WITH THE LOCAL BUILDING CODE.

SCALE: 1:5

DATE: 08-12-12