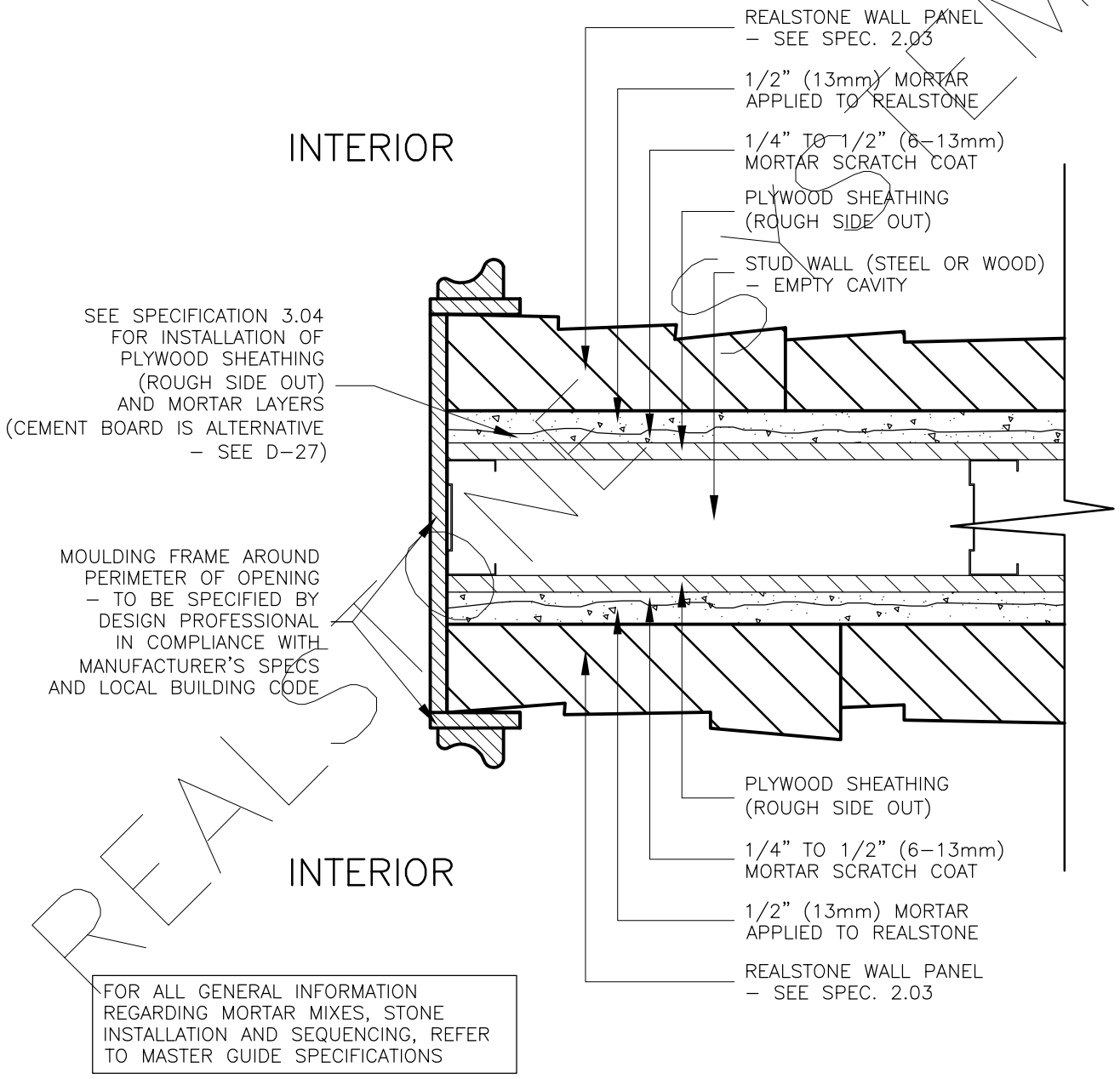


INTERIOR STUD WALL WITH PLYWOOD SHEATHING INTERIOR OPENING JAMB WITH MOULDING FRAME (PLAN)



DRAWING DESCRIPTION:

THIS DETAIL ILLUSTRATES A POTENTIAL INTERIOR OPENING JAMB INTERFACE WITH THE REALSTONE SYSTEM. THIS DETAIL SHOWS A CONTINUOUS MOULDING FRAME (WOOD, CAST, ECT.) WRAPPING AROUND THE PERIMETER OF THE OPENING, HOWEVER OTHER FINISHING MATERIALS CAN BE USED DEPENDING ON AESTHETIC PREFERENCE. THE REALSTONE SYSTEM IS USED ON BOTH SIDES OF THE INTERIOR WALL TO CREATE THE ARCHITECTURAL ILLUSION THAT THE WALL IS SOLID STONE. THESE DETAILS SHOULD BE SPECIFIED BY THE DESIGN PROFESSIONAL IN COMPLIANCE WITH ALL MANUFACTURER'S SPECS AND THE LOCAL BUILDING CODE.

SHEET NO:
D-39

DRAWING: INT. OPENING JAMB W/ MOULDING (PLAN)

realstone SYSTEMS™
Realstone Simply Installed

NOTE: REALSTONE SYSTEMS' DETAILS ARE PROVIDED FOR THE CLARIFICATION OF THE MANUFACTURED PRODUCT, ITS APPLICATIONS AND TO ASSIST IN THE PROCESS OF PROJECT SPECIFIC DETAILS. DESIGN PRINCIPLES AND SPECIFICATIONS INCORPORATED IN THE FINAL DETAILS ARE THE RESPONSIBILITY OF THE PROJECT DESIGN PROFESSIONAL IN COMPLIANCE WITH THE LOCAL BUILDING CODE.

SCALE: 1:5

DATE: 08-12-12