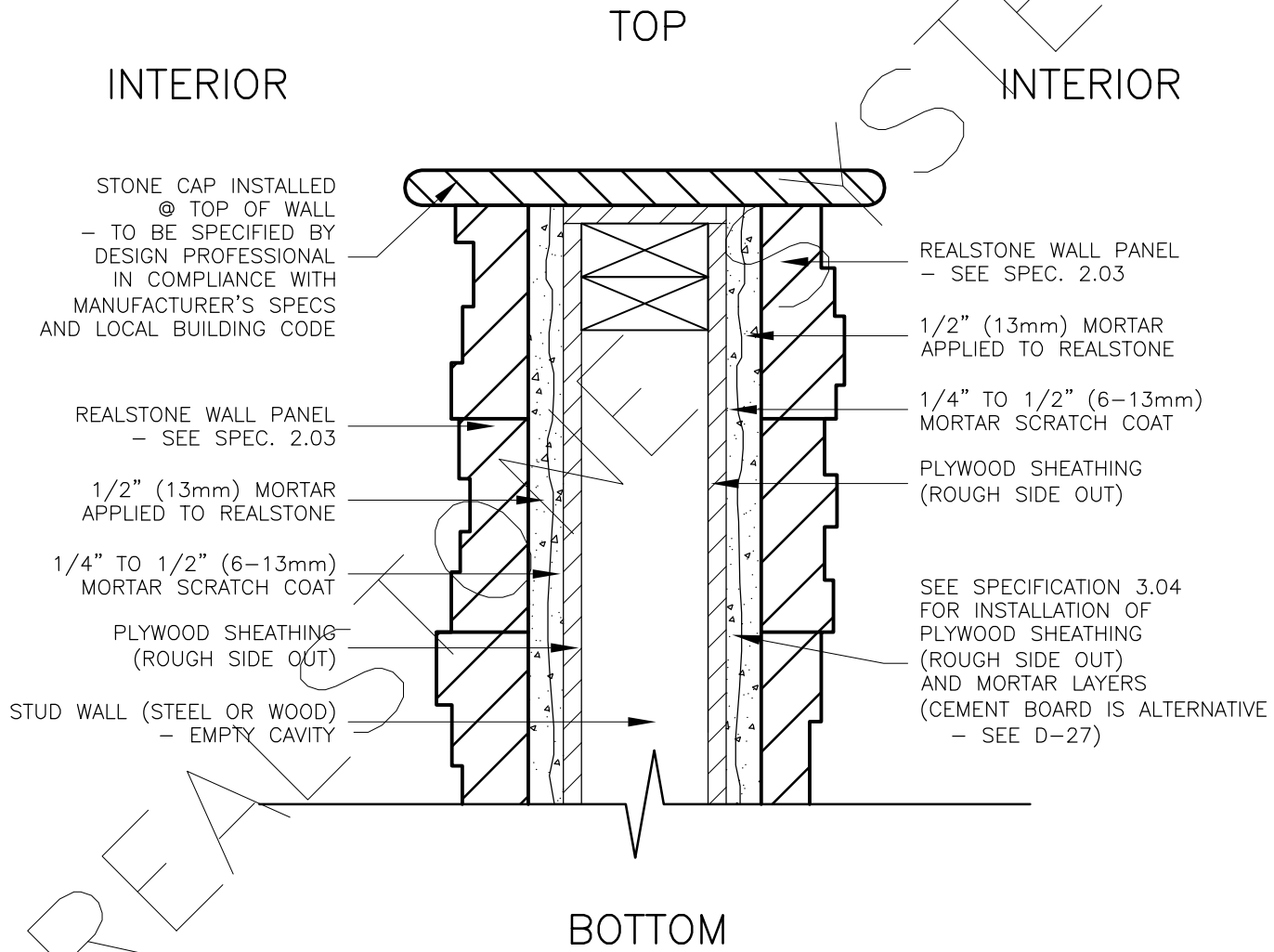


**INTERIOR STUD WALL WITH  
PLYWOOD SHEATHING  
INTERIOR HALF WALL WITH STONE CAP (SECTION)**



FOR ALL GENERAL INFORMATION REGARDING MORTAR MIXES, STONE INSTALLATION AND SEQUENCING, REFER TO MASTER GUIDE SPECIFICATIONS

**DRAWING DESCRIPTION:**

THIS DETAIL ILLUSTRATES A POTENTIAL HALF WALL CAP INTERFACE WITH THE REALSTONE SYSTEM. THIS DETAIL SHOWS A STONE CAP AT THE TOP OF THE HALF WALL, HOWEVER OTHER FINISHING MATERIALS CAN BE USED DEPENDING ON AESTHETIC PREFERENCE. IT SHOULD BE NOTED THAT THIS DETAIL COULD ALSO BE USED AT THE SILL OF AN INTERIOR OPENING, COUNTER TOP, OR LEDGE. THE REALSTONE SYSTEM IS USED ON BOTH SIDES OF THE INTERIOR WALL TO CREATE THE ARCHITECTURAL ILLUSION THAT THE WALL IS SOLID STONE. THESE DETAILS SHOULD BE SPECIFIED BY THE DESIGN PROFESSIONAL IN COMPLIANCE WITH ALL MANUFACTURER'S SPECS AND THE LOCAL BUILDING CODE.

SHEET NO:  
**D-40**

**DRAWING: INT. HALF WALL W/ STONE CAP (SECTION)**

**realstone SYSTEMS™**  
Realstone Simply Installed

**NOTE:** REALSTONE SYSTEMS' DETAILS ARE PROVIDED FOR THE CLARIFICATION OF THE MANUFACTURED PRODUCT, ITS APPLICATIONS AND TO ASSIST IN THE PROCESS OF PROJECT SPECIFIC DETAILS. DESIGN PRINCIPLES AND SPECIFICATIONS INCORPORATED IN THE FINAL DETAILS ARE THE RESPONSIBILITY OF THE PROJECT DESIGN PROFESSIONAL IN COMPLIANCE WITH THE LOCAL BUILDING CODE.

**SCALE: 1:5**

**DATE: 08-12-12**