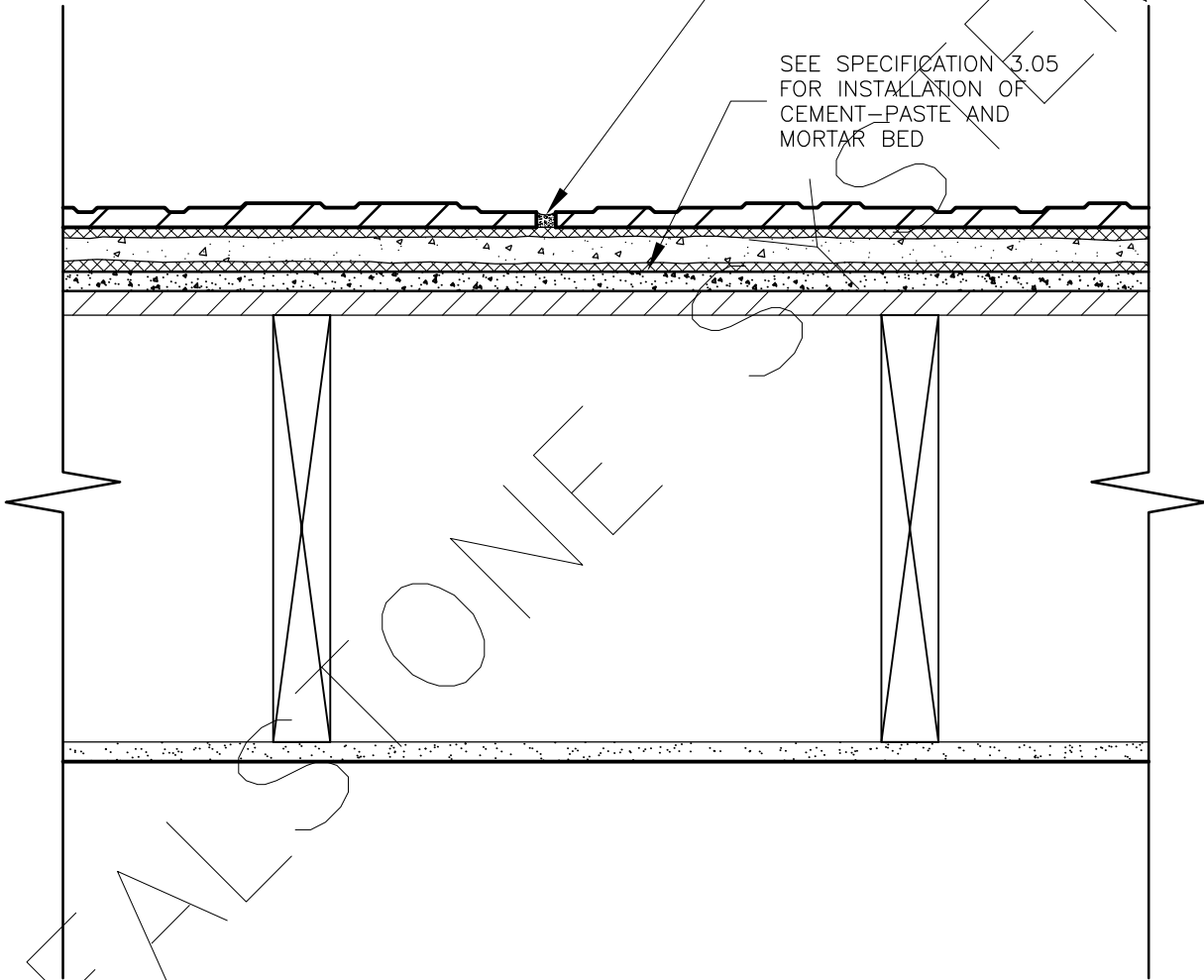


# INTERIOR FRAMED (JOIST) FLOOR WITH PLYWOOD SUBFLOOR (SECTION)

SEE SPECIFICATION 3.06  
FOR PROPER POINTING OF  
REALSTONE-JOINT SURFACES

SEE SPECIFICATION 3.05  
FOR INSTALLATION OF  
CEMENT-PASTE AND  
MORTAR BED



FOR ALL GENERAL INFORMATION  
REGARDING MORTAR MIXES, STONE  
INSTALLATION AND SEQUENCING, REFER  
TO MASTER GUIDE SPECIFICATIONS

**DRAWING DESCRIPTION:**

THIS DETAIL ILLUSTRATES THE REALSTONE MAT SYSTEM INSTALLED ON AN INTERIOR FRAMED FLOOR WITH A PLYWOOD SUBFLOOR. IT IS RECOMMENDED THAT THE REALSTONE MATS SHOULD NOT BE BONDED DIRECTLY ONTO THE PLYWOOD SUBFLOOR. A UNCOUPLING MEMBRANE OR INSTALLATION METHOD (CEMENT BOARD) THAT ALLOWS THE SUBFLOOR TO MOVE INDEPENDENTLY FROM THE STONE. THIS WILL PREVENT STRESS CRACKING IN THE STONE.

SHEET NO:

D-41

DRAWING: INT. FLOOR W/ WOOD SUBFLOOR (SECTION)

**realstone SYSTEMS™**  
Realstone Simply Installed

NOTE: REALSTONE SYSTEMS' DETAILS ARE PROVIDED FOR THE CLARIFICATION OF THE MANUFACTURED PRODUCT, ITS APPLICATIONS AND TO ASSIST IN THE PROCESS OF PROJECT SPECIFIC DETAILS. DESIGN PRINCIPLES AND SPECIFICATIONS INCORPORATED IN THE FINAL DETAILS ARE THE RESPONSIBILITY OF THE PROJECT DESIGN PROFESSIONAL IN COMPLIANCE WITH THE LOCAL BUILDING CODE.

SCALE: 1:5

DATE: 08-12-12