



Masonry Veneer Installation Systems



Natural Stone INSTALLATION

realstone **SYSTEMS**TM
Natural Stone Simply Installed

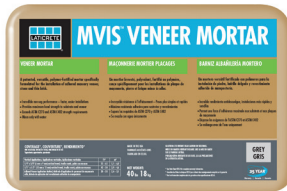


Globally Proven Construction Solutions
www.laticrete.com/mvis

Snap for more information.



THE LATICRETE ADVANTAGE

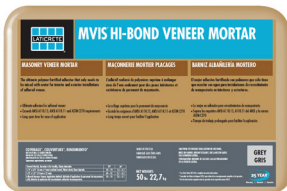


MVIS™ VENEER MORTAR

A patented polymer fortified mortar designed specifically for the installation of stone, thin brick and manufactured stone masonry veneers.

Our unique formulation provides exceptional workability, maximum non-sag performance and extended adjustability of installed pieces for all vertical installations. MVIS™ Veneer Mortar allows for more rapid installation resulting in higher labor production rates, and maximum bond between substrate and selected veneers.

See Data Sheet 060.0 for complete product information.



MVIS HI-BOND VENEER MORTAR

The ultimate, polymer fortified, adhesive mortar for interior and exterior installation of large format adhered masonry veneer, stone,

ceramic tile, pavers or thin brick. MVIS Hi-Bond Veneer Mortar mixes easily with water and is formulated to achieve unsurpassed workability and adhesion.

See Data Sheet 646.0 for complete product information.

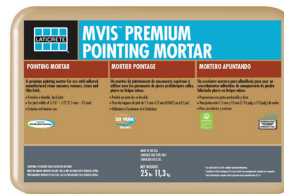


MVIS PREMIUM MORTAR BED

A polymer fortified blend of carefully selected raw materials, portland cement and graded aggregates. MVIS Premium Mortar Bed does

not require the use of latex admixtures. Just add water to produce thick bed mortar with exceptional strength. MVIS Premium Mortar Bed is ideal as the brown coat over wire lath in the MVIS™ System.

See Data Sheet 263.0 for complete product information.



MVIS PREMIUM POINTING MORTAR

MVIS Premium Pointing Mortar is a factory prepared, high strength, fast setting, high performance mortar system designed for pointing joints

in new and existing masonry veneer installations. MVIS Premium Pointing Mortar is color consistent. Ideal for floors and walls (joint widths of 1/4" – 1/2" [6 – 12 mm]). Mix only with water.

See Data Sheet 250.0 for complete product information.



LATAPOXY® WATERPROOF FLASHING MORTAR

An epoxy-based 3-component, trowel applied, waterproofing and vapor barrier membrane. Can be used to waterproof seams, gaps or joints between a variety of substrates and bonds to metal and PVC pipe penetrations or flashing. It is specifically designed to be used as a fast curing waterproof flashing under stone, thin brick or manufactured stone masonry veneers.

See Data Sheet 070.0 for complete product information.

¹ United States Patent No.: 6784229 B2 (and other Patents).

[†] United States Patent No.: 6881768 (and other Patents).

THE LATICRETE ADVANTAGE



LATICRETE LATASIL™

High performance, 100% silicone sealant designed for use in coves, corners, changes in plane and expansion joints in exterior and interior applications of tile and stone. Can be used in swimming pools and other wet area applications. LATASIL™ conforms to ASTM C920 and ASTM C794 adhesion properties and inhibits the growth of stain-causing mold and mildew in sealant joints with Microban® antimicrobial product protection.

See Data Sheets 6200.1 complete product information.

MVIS TRANSITION TAPE PRIMER



A low VOC water based primer/adhesive designed specifically for use with MVIS Transition Tape and MVIS Flexible Sealing Tape. MVIS Transition Tape Primer forms an aggressive, high tack finish on the treated substrate to insure a tenacious bond between the tape and substrate; including concrete masonry units (CMU), glass faced sheathing panels, plywood and oriented strand boards (OSB). It is fast drying, from milky white to clear and remains permanently pressure sensitive growing stronger and more tenacious with age.

Refer to Data Sheet 303.0 9200-0005-2

MVIS AIR & WATER BARRIER



A single component, load bearing, vapor permeable, fluid applied, waterproofing, crack isolation, air barrier membrane. MVIS Air & Water Barrier produces a seamless, monolithic elastomeric coating and bonds directly to a wide variety of substrates. A vital component of the MVIS Air & Water Barrier comprehensive building protection system.

See Data Sheet 661.0 for complete product information.



MVIS FLEXIBLE SEALING TAPE



A flexible, stretchable, and tear resistant flashing detail tape that allows for easy installation in awkward configurations such as window or door openings, I-beams, and other wall penetrations. MVIS™ Flexible Sealing Tape is a self-adhering air, vapor and weather barrier that protects structures from air, vapor, wind, and rain. MVIS Flexible Sealing Tape is a stretchable flashing tape made from an elastic non-woven factory laminated to a proprietary adhesive. It can be used as a transition material with MVIS Air & Water Barrier where different substrates meet to provide continuity.

Refer to Data Sheet 659.0 9211-3750-2, 9212-5625-2



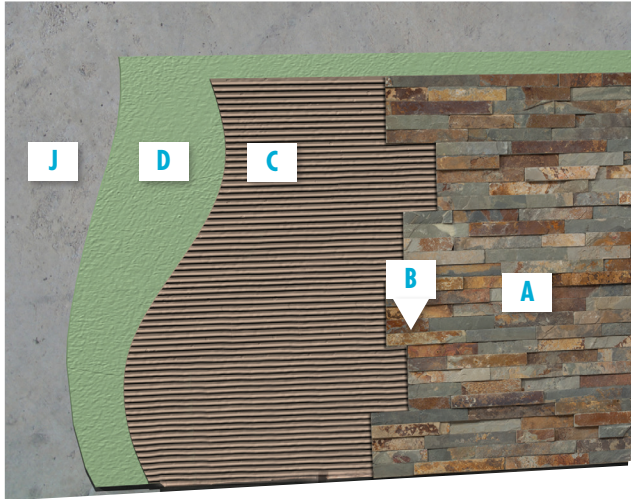
MVIS TRANSITION TAPE

A self-adhering, self-sealing air, vapor and weather barrier that protects structures from air, vapor, wind, and rain. MVIS™ Transition Tape provides a durable seal around doors, windows, penetrations and can be used to seal joints, seams, holes and other undesirable openings in wall systems. It resists the elements and prohibits harsh environmental conditions from invading a structure. Use as a transition material with MVIS Air & Water Barrier where different substrates meet, or at beams, columns, and similar joints or connections to provide continuity.

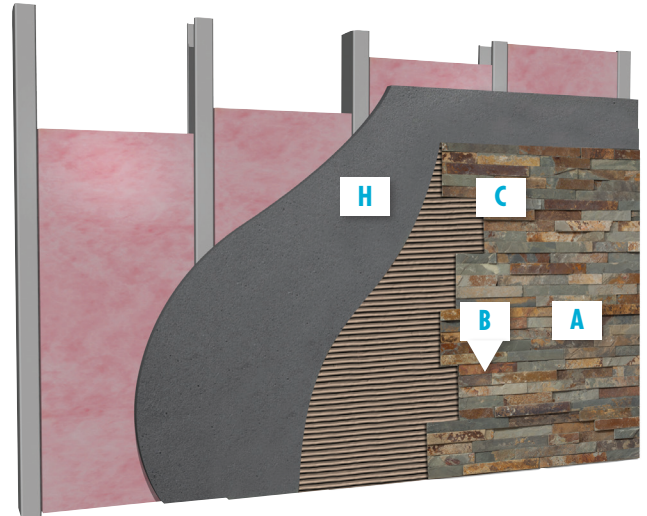
See Data Sheet 658.0 for complete product information.

[^] United States Patent No.: 6784229 B2 (and other Patents).
[†] United States Patent No.: 6881768 (and other Patents).

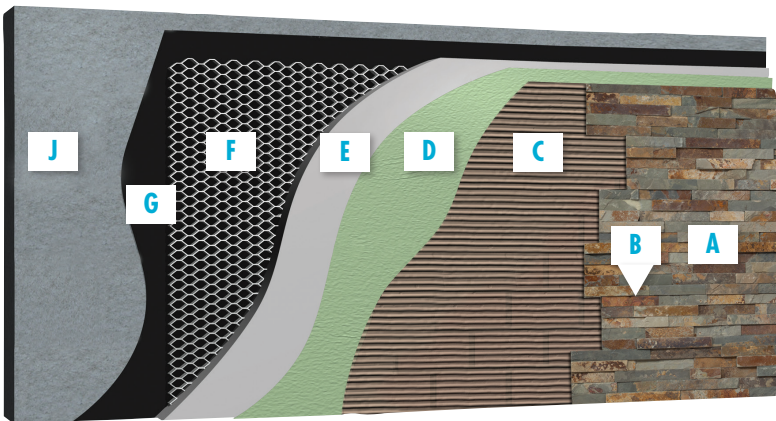
Exterior Wall
Concrete wall — Method: Direct adhere with fluid applied air and water barrier waterproofing membrane



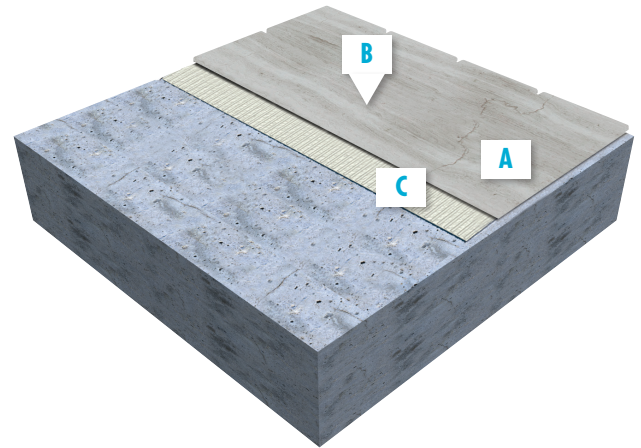
Interior Wall
Framed wall with cement backer board substrate



Exterior Wall
Concrete wall — lathe with scratch and brown coat



Interior Floor
Concrete — Direct Bond



DETAIL LEGEND

A RealStone Adhered Stone or Stone Veneers

B MVIS™ Premium Pointing Mortar

C MVIS Veneer Mortar

D MVIS Air & Water Barrier

(for warranty qualification some applications may require waterproofing and air and water barrier membrane)

E MVIS Premium Mortar Bed

F Metal Lath, 3.4# galvanized diamond wire lath

G Vapor retarder/cleavage membrane type and location per design professional (e.g. Two layers of 15 lb builders felt or 4 mil sheeting)

H 1/2" Cement Board

I e²XP® exterior rated sheathing

J Concrete or masonry

NOTE: 1. Substrates scheduled to receive manufactured stone, natural stone and thin brick must be structurally sound, rigid and conform to good design/engineering practices in accord with all applicable building codes. Lateral bracing and edge support for cement backer board panels is required.

2. MVIS™ Pointing Mortar is designed to meet product applicable project specifications. MVIS Pointing Mortar

does not inhibit efflorescence from occurring in natural or manufactured stone facade installations. Efflorescence is a normal condition that may occur when installing portland cement based products. During installation, strike joints in a consistent time frame relevant to application time. Pointing mortar should be thumbprint dry before striking. Striking joints too early or too late can create color inconsistencies.

3. MVIS Pointing Mortar color samples are guides only.

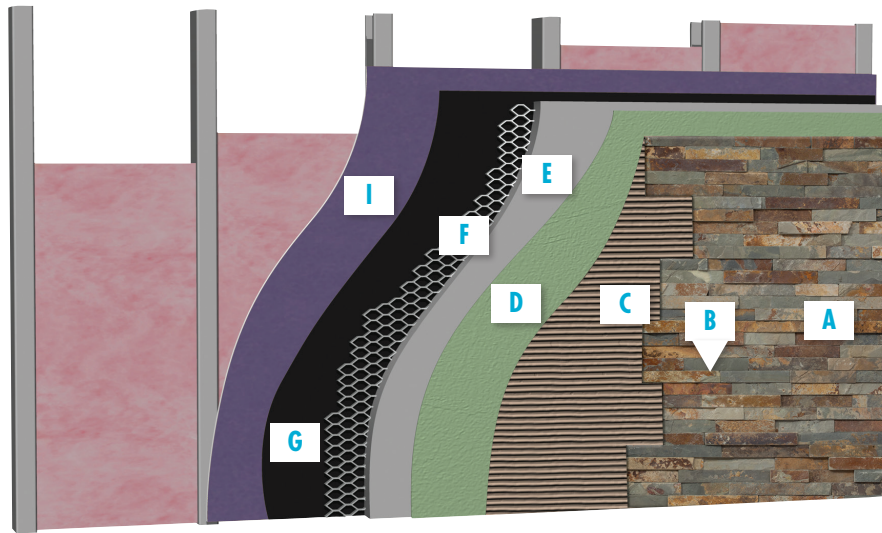
LATICRETE does not warrant color matching to any color guide produced. Actual shade and texture will depend on job site conditions, lighting, installation techniques, and types of tile or stone used. Verify actual appearance and compatibility with a test area before installing. Blend colored mortars with different control numbers. Follow ANSI A108.10/MMSA Bulletin #9. No claims for color shade variations will be honored.

4. Please consult LATICRETE Technical Services for more information. 1.800.243.4788, ext. 235, www.laticrete.com, technicalservices@laticrete.com.

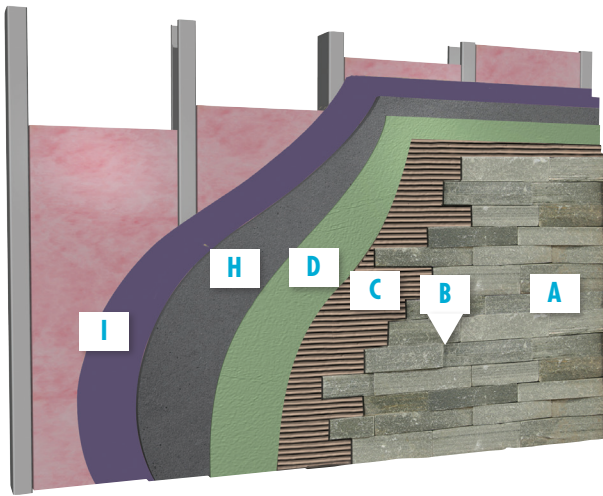
5. For complete application information and limitations consult related Product Data Sheets related to these details and applicable standards. See warranty Data Sheet DS-025.OSPD_25 Year System Warranty - MVIS for full information and terms.

6. As a professional courtesy, LATICRETE offers technical services free of charge. The user maintains all responsibility for verifying the applicability and suitability of the technical service or information provided.

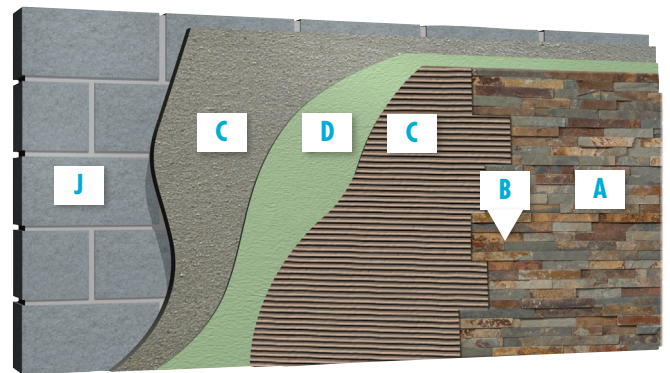
Exterior Wall
Framed wall with exterior rated sheathing — Lathe with scratch and brown coat



Exterior Wall
Framed wall with exterior rated sheathing —
Cement backer board substrate



Exterior Wall
Concrete Masonry Unit (CMU) wall with skim coat —
Direct adhered with fluid applied air and water barrier



DETAIL LEGEND

- | | | |
|--|---|--|
| A RealStone Adhered Stone or Stone Veneers | E MVIS Premium Mortar Bed | H 1/2" Cement Board |
| B MVIS™ Premium Pointing Mortar | F Metal Lath, 3.4# galvanized diamond wire lath | I e ² XP® exterior rated sheathing |
| C MVIS Veneer Mortar | G Vapor retarder/cleavage membrane type and location per design professional (e.g. 15 lb builders felt or 4 mil polyethylene sheeting) | J Concrete or masonry |
| D MVIS Air & Water Barrier
(for warranty qualification some applications may require waterproofing and air and water barrier membrane) | | |

NOTE: 1. Substrates scheduled to receive manufactured stone, natural stone and thin brick must be structurally sound, rigid and conform to good design/engineering practices in accord with all applicable building codes. Lateral bracing and edge support for cement backer board panels is required.

2. MVIS™ Pointing Mortar is designed to meet product applicable project specifications. MVIS Pointing Mortar

does not inhibit efflorescence from occurring in natural or manufactured stone facade installations. Efflorescence is a normal condition that may occur when installing portland cement based products. During installation, strike joints in a consistent time frame relevant to application time. Pointing mortar should be thumbprint dry before striking. Striking joints too early or too late can create color inconsistencies.

3. MVIS Pointing Mortar color samples are guides only.

LATICRETE does not warrant color matching to any color guide produced. Actual shade and texture will depend on job site conditions, lighting, installation techniques, and types of tile or stone used. Verify actual appearance and compatibility with a test area before installing. Blend colored mortars with different control numbers. Follow ANSI A108.10/MMSA Bulletin #9. No claims for color shade variations will be honored.

4. Please consult LATICRETE Technical Services for more information. 1.800.243.4788, ext. 235, www.laticrete.com, technicalservices@laticrete.com.

5. For complete application information and limitations consult related Product Data Sheets related to these details and applicable standards. See warranty Data Sheet DS-025.OSPD_25 Year System Warranty - MVIS for full information and terms.

6. As a professional courtesy, LATICRETE offers technical services free of charge. The user maintains all responsibility for verifying the applicability and suitability of the technical service or information provided.

LATICRETE has developed an enhanced system of adhered veneer installation products to improve upon the traditional methods of installation that have demonstrated the tendency to fail through delamination and premature corrosion of the structural reinforcing.

Masonry Veneer Installations Systems (MVIS™) is similar to the traditional method however, instead of utilizing standard masonry cement mortars as in the past, polymer fortified adhesive mortar is used. MVIS Veneer Mortar has been specifically designed to provide high bond strength, flexibility and durability. It is used employing the same installation methods the installers have become accustomed to.

A further improvement is the inclusion of MVIS Air & Water Barrier, a liquid applied breathable waterproof membrane that prevents moisture intrusion in barrier wall constructs. This membrane is located outside of the corrodible structural components of the wall offering maximum protection and longevity to the entire assembly.

In addition, MVIS allows for another option that increases quality and durability. Instead of a field formed lath and plaster substrate, which is subject to great variability in workmanship (and therefore quality), cement backer board is used. This substrate is typically used with natural stone installations and is “time and field proven” to provide great consistency and durability in installations. By replacing the lath and plaster coat, this option also decreases the cost of the system at the same time as increasing performance levels.

LATAPOXY® Waterproof Flashing Mortar and LATASIL™ Sealant allow for a complete installation that is protected by the LATICRETE System Warranty*.



COMPLETE SYSTEM WARRANTIES

LATICRETE offers a comprehensive 25 year, 100% labor and materials system warranty* for masonry veneer installations over concrete and masonry substrates (for both interior and exterior applications) and a 15 year, 100% labor and materials system warranty** for steel or wood framed exterior facades.

LATICRETE warranties cover any suitable stone manufacturer’s product, and are customizable to suit your specific project requirements.



GREENGUARD Certified LOW VOC LEED COMPLIANT Products



Member of



*See Data Sheet 025.0 for complete warranty details.

**See Data Sheet 230.15 for complete warranty details.



**Globally Proven
Construction Solutions**

Corporate Headquarters:

LATICRETE International, Inc.
One LATICRETE Park North
Bethany, CT 06524-3423 USA
1.800.243.4788
+1.203.393.0010

www.laticrete.com/mvis

Africa: +27.078.343.4029

Asia Pacific: +852.2526.6660

Australia: +61.7.3865.1599

China: +86.21.5789.3300

Europe: +44.871.284.5959

India: +91.40.3041.3100

Latin America: +1.203.393.0010

Middle East: +971.7.244.6396

South East Asia: +65.6515.3028

Mexico: +52.81.8348.5121

UK: +44.151.486.6101

DS-005.4-0215

©2015 LATICRETE International, Inc.
All trademarks shown are the intellectual properties of their respective owners.
PHOTOS COURTESY OF REALSTONE SYSTEMS™.

REALSTONE PRODUCTS

Portugal Collection

Terra
Cinza
Venato
Areia

Realstone Collection Planks

Birch
Mocha
Nero

Realstone Collection Panels

Latte Honed
Latte LedgeStone
Roman Beige
White Birch Honed
White Birch LedgeStone
Mocha Honed
Mocha LedgeStone
Nero Honed
Nero LedgeStone

Realstone Classic Series Panels

Silver Alabaster Shadowstone
Arctic White Shadowstone
Bluestone Shadowstone
Charcoal Shadowstone
Chiseled Sea Shell Shadowstone
Copper Shadowstone
Cyan Green Shadowstone
Emerald Shadowstone
Midnight Sky Shadowstone
Sierra Shadowstone
Terracotta Shadowstone
Bluestone LedgeStone
Charcoal LedgeStone

Desert Rose LedgeStone
Mountain Rust LedgeStone
Terracotta LedgeStone
Bluestone Accentstone
Charcoal Accentstone
Midnight Sky Accentstone
Sierra Accentstone
Terracotta Accentstone

Latte Accentstone

Thin Silver Alabaster Shadowstone
Thin Arctic White Angled
Thin Blush Sand Shadowstone
Thin Burgundy Shadowstone
Thin Charcoal Shadowstone
Thin Copper Shadowstone
Thin Midnight Sky Shadowstone
Thin Mountain Rust LedgeStone
Thin Sierra Shadowstone
Thin Terracotta LedgeStone
Thin Terracotta Shadowstone

realstone **SYSTEMS**[™]
Natural Stone Simply Installed

Realstone Systems
1170 Souter St.
Troy, MI 48083

www.realstone.com

Tel: +1.866.698.5066
Fax: +1.248.614.6620
Email: sales@realstone.com